

Table 1. Estimated statewide deer harvest in South Carolina in 2023.

County	Acres*	Square Miles	Buck Harvest	Doe Harvest	Total Harvest	Harvest Rates		% Change from 2022
						Ac/Deer	Deer/Mi. ²	
Abbeville	223,113	349	3,231	2,050	5,281	42.2	15.1	65.0
Aiken	500,546	782	3,584	2,822	6,406	78.1	8.2	19.8
Allendale	216,455	338	2,011	2,227	4,238	51.1	12.5	28.9
Anderson	219,068	342	4,674	3,381	8,055	27.2	23.5	58.9
Bamberg	196,573	307	2,118	2,669	4,787	41.1	15.6	-12.4
Barnwell	281,764	440	1,417	1,123	2,540	110.9	5.8	-21.6
Beaufort	147,441	230	946	950	1,896	77.8	8.2	-16.1
Berkeley	567,530	887	2,792	2,469	5,261	107.9	5.9	11.7
Calhoun	190,584	298	2,249	1,399	3,648	52.3	12.2	12.3
Charleston	288,732	451	2,831	2,848	5,679	50.8	12.6	44.7
Cherokee	156,664	245	1,745	1,035	2,780	56.3	11.4	13.5
Chester	300,589	470	2,537	1,965	4,502	66.8	9.6	-9.3
Chesterfield	372,478	582	2,335	1,796	4,131	90.2	7.1	-9.3
Clarendon	298,087	466	1,690	2,029	3,719	80.2	8.0	35.9
Colleton	502,666	785	4,187	4,030	8,217	61.2	10.5	53.8
Darlington	286,228	447	2,204	2,427	4,631	61.8	10.4	64.4
Dillon	214,069	334	559	879	1,438	148.9	4.3	13.1
Dorchester	302,717	473	1,883	1,642	3,525	85.9	7.5	2.8
Edgefield	246,543	385	1,515	1,134	2,649	93.1	6.9	-29.6
Fairfield	384,607	601	3,269	2,490	5,759	66.8	9.6	8.9
Florence	397,888	622	1,836	2,076	3,912	101.7	6.3	-13.6
Georgetown	399,638	624	1,934	2,457	4,391	91.0	7.0	54.8
Greenville	294,257	460	2,799	2,347	5,146	57.2	11.2	26.8
Greenwood	204,400	319	1,382	1,330	2,712	75.4	8.5	-16.9
Hampton	324,840	508	3,513	4,379	7,892	41.2	15.5	5.4
Horry	533,336	833	1,799	1,463	3,262	163.5	3.9	86.8
Jasper	309,889	484	1,868	1,667	3,535	87.7	7.3	119.4
Kershaw	360,485	563	2,724	1,639	4,363	82.6	7.7	25.9
Lancaster	266,382	416	2,855	1,738	4,593	58.0	11.0	44.8
Laurens	317,916	497	3,063	2,678	5,741	55.4	11.6	-6.3
Lee	220,106	344	1,042	521	1,563	140.8	4.5	-57.4
Lexington	280,742	439	2,322	1,563	3,885	72.3	8.9	11.4
McCormick	212,021	331	829	1,241	2,070	102.4	6.2	-25.0
Marion	216,907	339	756	930	1,686	128.7	5.0	65.3
Marlboro	281,271	439	981	745	1,726	163.0	3.9	-34.1
Newberry	317,761	497	3,243	2,698	5,941	53.5	12.0	7.9
Oconee	284,348	444	1,655	625	2,280	124.7	5.1	-4.4
Orangeburg	504,516	788	5,289	5,435	10,724	47.0	13.6	5.4
Pickens	219,926	344	1,352	917	2,269	96.9	6.6	-26.0
Richland	340,121	531	1,558	1,509	3,067	110.9	5.8	3.8
Saluda	192,173	300	1,335	1,223	2,558	75.1	8.5	-3.4
Spartanburg	265,939	416	3,188	2,463	5,651	47.1	13.6	-7.8
Sumter	338,968	530	1,704	1,431	3,135	108.1	5.9	13.8
Union	258,111	403	2,363	2,327	4,690	55.0	11.6	0.8
Williamsburg	513,851	803	2,626	4,867	7,493	68.6	9.3	20.2
York	276,650	432	2,559	2,184	4,743	58.3	11.0	1.1
Total	14,028,896	21,920	104,353	93,818	198,171	80.8	9.3	10.5
95% Confidence Interval for harvest			(+ -4,038)	(+ -4,502)	(+ -6,901)			

* Acreage shown represents the acreage of forested land and acreage of row crops considered to be significant deer habitat within each county.

Table 2. County rankings based on deer harvested per unit area in South Carolina in 2023.

County	Acres*	Square Miles	Buck Harvest	Doe Harvest	Total Harvest	Harvest Rates		% Change from 2022
						Ac/Deer	Deer/Mi. ²	
Anderson	219,068	342	4,674	3,381	8,055	27.2	23.5	58.9
Bamberg	196,573	307	2,118	2,669	4,787	41.1	15.6	-12.4
Hampton	324,840	508	3,513	4,379	7,892	41.2	15.5	5.4
Abbeville	223,113	349	3,231	2,050	5,281	42.2	15.1	65.0
Orangeburg	504,516	788	5,289	5,435	10,724	47.0	13.6	5.4
Spartanburg	265,939	416	3,188	2,463	5,651	47.1	13.6	-7.8
Charleston	288,732	451	2,831	2,848	5,679	50.8	12.6	44.7
Allendale	216,455	338	2,011	2,227	4,238	51.1	12.5	28.9
Calhoun	190,584	298	2,249	1,399	3,648	52.3	12.2	12.3
Newberry	317,761	497	3,243	2,698	5,941	53.5	12.0	7.9
Union	258,111	403	2,363	2,327	4,690	55.0	11.6	0.8
Laurens	317,916	497	3,063	2,678	5,741	55.4	11.6	-6.3
Cherokee	156,664	245	1,745	1,035	2,780	56.3	11.4	13.5
Greenville	294,257	460	2,799	2,347	5,146	57.2	11.2	26.8
Lancaster	266,382	416	2,855	1,738	4,593	58.0	11.0	44.8
York	276,650	432	2,559	2,184	4,743	58.3	11.0	1.1
Colleton	502,666	785	4,187	4,030	8,217	61.2	10.5	53.8
Darlington	286,228	447	2,204	2,427	4,631	61.8	10.4	64.4
Chester	300,589	470	2,537	1,965	4,502	66.8	9.6	-9.3
Fairfield	384,607	601	3,269	2,490	5,759	66.8	9.6	8.9
Williamsburg	513,851	803	2,626	4,867	7,493	68.6	9.3	20.2
Lexington	280,742	439	2,322	1,563	3,885	72.3	8.9	11.4
Saluda	192,173	300	1,335	1,223	2,558	75.1	8.5	-3.4
Greenwood	204,400	319	1,382	1,330	2,712	75.4	8.5	-16.9
Beaufort	147,441	230	946	950	1,896	77.8	8.2	-16.1
Aiken	500,546	782	3,584	2,822	6,406	78.1	8.2	19.8
Clarendon	298,087	466	1,690	2,029	3,719	80.2	8.0	35.9
Kershaw	360,485	563	2,724	1,639	4,363	82.6	7.7	25.9
Dorchester	302,717	473	1,883	1,642	3,525	85.9	7.5	2.8
Jasper	309,889	484	1,868	1,667	3,535	87.7	7.3	119.4
Chesterfield	372,478	582	2,335	1,796	4,131	90.2	7.1	-9.3
Georgetown	399,638	624	1,934	2,457	4,391	91.0	7.0	54.8
Edgefield	246,543	385	1,515	1,134	2,649	93.1	6.9	-29.6
Pickens	219,926	344	1,352	917	2,269	96.9	6.6	-26.0
Florence	397,888	622	1,836	2,076	3,912	101.7	6.3	-13.6
McCormick	212,021	331	829	1,241	2,070	102.4	6.2	-25.0
Berkeley	567,530	887	2,792	2,469	5,261	107.9	5.9	11.7
Sumter	338,968	530	1,704	1,431	3,135	108.1	5.9	13.8
Richland	340,121	531	1,558	1,509	3,067	110.9	5.8	3.8
Barnwell	281,764	440	1,417	1,123	2,540	110.9	5.8	-21.6
Oconee	284,348	444	1,655	625	2,280	124.7	5.1	-4.4
Marion	216,907	339	756	930	1,686	128.7	5.0	65.3
Lee	220,106	344	1,042	521	1,563	140.8	4.5	-57.4
Dillon	214,069	334	559	879	1,438	148.9	4.3	13.1
Marlboro	281,271	439	981	745	1,726	163.0	3.9	-34.1
Horry	533,336	833	1,799	1,463	3,262	163.5	3.9	86.8
Total	14,028,896	21,920	104,353	93,818	198,171	80.8	9.3	10.5

95% Confidence Interval for harvest (+ -4,038) (+ -4,502) (+ -6,901)

* Acreage shown represents the acreage of forested land and acreage of row crops considered to be significant deer habitat within each county.

Table 3. County rankings based on total deer harvested in South Carolina in 2023.

County	Acres*	Square Miles	Buck Harvest	Doe Harvest	Total Harvest	Harvest Rates		% Change from 2022
						Ac/Deer	Deer/Mi. ²	
Orangeburg	504,516	788	5,289	5,435	10,724	47.0	13.6	5.4
Colleton	502,666	785	4,187	4,030	8,217	61.2	10.5	53.8
Anderson	219,068	342	4,674	3,381	8,055	27.2	23.5	58.9
Hampton	324,840	508	3,513	4,379	7,892	41.2	15.5	5.4
Williamsburg	513,851	803	2,626	4,867	7,493	68.6	9.3	20.2
Aiken	500,546	782	3,584	2,822	6,406	78.1	8.2	19.8
Newberry	317,761	497	3,243	2,698	5,941	53.5	12.0	7.9
Fairfield	384,607	601	3,269	2,490	5,759	66.8	9.6	8.9
Laurens	317,916	497	3,063	2,678	5,741	55.4	11.6	-6.3
Charleston	288,732	451	2,831	2,848	5,679	50.8	12.6	44.7
Spartanburg	265,939	416	3,188	2,463	5,651	47.1	13.6	-7.8
Abbeville	223,113	349	3,231	2,050	5,281	42.2	15.1	65.0
Berkeley	567,530	887	2,792	2,469	5,261	107.9	5.9	11.7
Greenville	294,257	460	2,799	2,347	5,146	57.2	11.2	26.8
Bamberg	196,573	307	2,118	2,669	4,787	41.1	15.6	-12.4
York	276,650	432	2,559	2,184	4,743	58.3	11.0	1.1
Union	258,111	403	2,363	2,327	4,690	55.0	11.6	0.8
Darlington	286,228	447	2,204	2,427	4,631	61.8	10.4	64.4
Lancaster	266,382	416	2,855	1,738	4,593	58.0	11.0	44.8
Chester	300,589	470	2,537	1,965	4,502	66.8	9.6	-9.3
Georgetown	399,638	624	1,934	2,457	4,391	91.0	7.0	54.8
Kershaw	360,485	563	2,724	1,639	4,363	82.6	7.7	25.9
Allendale	216,455	338	2,011	2,227	4,238	51.1	12.5	28.9
Chesterfield	372,478	582	2,335	1,796	4,131	90.2	7.1	-9.3
Florence	397,888	622	1,836	2,076	3,912	101.7	6.3	-13.6
Lexington	280,742	439	2,322	1,563	3,885	72.3	8.9	11.4
Clarendon	298,087	466	1,690	2,029	3,719	80.2	8.0	35.9
Calhoun	190,584	298	2,249	1,399	3,648	52.3	12.2	12.3
Jasper	309,889	484	1,868	1,667	3,535	87.7	7.3	119.4
Dorchester	302,717	473	1,883	1,642	3,525	85.9	7.5	2.8
Horry	533,336	833	1,799	1,463	3,262	163.5	3.9	86.8
Sumter	338,968	530	1,704	1,431	3,135	108.1	5.9	13.8
Richland	340,121	531	1,558	1,509	3,067	110.9	5.8	3.8
Cherokee	156,664	245	1,745	1,035	2,780	56.3	11.4	13.5
Greenwood	204,400	319	1,382	1,330	2,712	75.4	8.5	-16.9
Edgefield	246,543	385	1,515	1,134	2,649	93.1	6.9	-29.6
Saluda	192,173	300	1,335	1,223	2,558	75.1	8.5	-3.4
Barnwell	281,764	440	1,417	1,123	2,540	110.9	5.8	-21.6
Oconee	284,348	444	1,655	625	2,280	124.7	5.1	-4.4
Pickens	219,926	344	1,352	917	2,269	96.9	6.6	-26.0
McCormick	212,021	331	829	1,241	2,070	102.4	6.2	-25.0
Beaufort	147,441	230	946	950	1,896	77.8	8.2	-16.1
Marlboro	281,271	439	981	745	1,726	163.0	3.9	-34.1
Marion	216,907	339	756	930	1,686	128.7	5.0	65.3
Lee	220,106	344	1,042	521	1,563	140.8	4.5	-57.4
Dillon	214,069	334	559	879	1,438	148.9	4.3	13.1
Total	14,028,896	21,920	104,353	93,818	198,171	80.8	9.3	10.5
95% Confidence Interval for harvest			(+ -4,038)	(+ -4,502)	(+ -6,901)			

* Acreage shown represents the acreage of forested land and acreage of row crops considered to be significant deer habitat within each county.

Table 4. Estimated deer harvest on Wildlife Management Areas in South Carolina in 2023.

Area	Acreage	Bucks	Does	Total	Deer/Mi.²
Mountain Hunt Unit	193,566	1,232	697	1,929	6.4
Central Piedmont Hunt Unit	159,793	1,515	1,338	2,853	11.4
Western Piedmont Hunt Unit	119,077	804	723	1,527	8.2
Subtotal for Upstate WMA's	472,436	3,551	2,758	6,309	8.5
Coastal WMA's*					
Bear Island WMA	1,519	7	3	10	4.2
Bonneau Ferry WMA ¹	10,697	35	45	117	7.0
Botany Bay WMA	2,000	12	19	31	9.9
Coosawhatchie	3,700	10	25	35	6.1
Crackerneck WMA	10,470	37	38	75	4.6
Donnelley WMA	8,048	38	49	87	6.9
Francis Marion WMA	252,578	151	134	285	0.7
Hamilton Ridge	13,281	39	21	60	2.9
Liberty Hill WMA	7,876	19	13	32	2.6
McBee WMA	1,213	13	18	31	16.4
Moultrie WMA	9,480	15	8	23	1.6
Oak Lea WMA	2,024	5	13	18	5.7
Palachucola WMA	5,947	33	28	61	6.6
Wateree River WMA	3,674	14	4	18	3.1
Webb Wildlife Center WMA	5,866	38	43	81	8.8
Subtotal for Coastal WMA's	338,373	466	461	964	1.8
Total	810,809	4,017	3,219	7,273	5.7

*Check Station data. ¹ Total includes deer of unknown sex

Table 5. Hunter opinion (percent) regarding the number of deer in the area hunted most often in South Carolina in 2023 compared to previous years.

	Increasing	About the Same	Decreasing
Residents	17.7	59.5	22.8
Non-Residents	12.2	59.8	28.0
Overall	16.6	59.5	23.9

Table 6. Resident deer hunter and deer harvest statistics in South Carolina in 2023.

County	Number Hunters	Man/Days Hunted	Percent Success	Deer/Hunter	Days/Deer	Buck Harvest	Doe Harvest	Total Harvest
Abbeville	3,709	51,926	76	1.3	10.5	3,096	1,870	4,967
Aiken	4,128	68,183	71	1.5	11.3	3,419	2,612	6,031
Allendale	1,774	18,480	80	1.3	8.1	1,097	1,193	2,290
Anderson	5,289	74,406	78	1.5	9.3	4,644	3,322	7,966
Bamberg	1,774	32,187	80	2.0	9.2	1,548	1,935	3,483
Barnwell	1,613	19,158	84	1.1	10.6	968	839	1,806
Beaufort	1,355	14,611	76	1.3	8.1	871	935	1,806
Berkeley	3,967	52,345	71	1.2	10.7	2,612	2,290	4,902
Calhoun	2,451	30,703	76	1.4	8.8	2,129	1,355	3,483
Charleston	4,096	54,895	71	1.3	10.0	2,741	2,774	5,515
Cherokee	2,000	25,126	76	1.2	10.3	1,580	871	2,451
Chester	3,354	40,348	72	1.0	11.6	1,967	1,516	3,483
Chesterfield	2,064	35,543	85	1.6	10.7	1,871	1,451	3,322
Clarendon	2,387	32,027	70	1.5	8.8	1,645	2,000	3,644
Colleton	5,709	79,824	69	1.4	10.4	3,902	3,806	7,708
Darlington	2,161	36,993	74	2.1	8.3	2,129	2,322	4,451
Dillon	839	13,191	76	1.5	10.5	484	774	1,258
Dorchester	2,838	46,637	69	1.2	13.5	1,838	1,613	3,451
Edgefield	2,483	22,771	62	0.9	9.9	1,290	1,000	2,290
Fairfield	4,225	58,217	78	1.2	11.3	2,999	2,161	5,160
Florence	2,806	42,959	71	1.4	11.2	1,806	2,032	3,838
Georgetown	2,935	50,443	74	1.4	12.5	1,709	2,322	4,031
Greenville	4,515	54,861	65	1.1	11.0	2,709	2,258	4,967
Greenwood	2,774	37,606	59	0.9	14.8	1,322	1,226	2,548
Hampton	3,257	37,090	81	1.5	7.7	2,000	2,806	4,806
Horry	2,806	43,992	62	1.1	14.1	1,709	1,419	3,128
Jasper	1,742	21,384	81	1.6	7.8	1,419	1,322	2,741
Kershaw	3,386	48,701	67	1.1	13.4	2,290	1,355	3,645
Lancaster	2,451	32,574	77	1.6	8.3	2,451	1,484	3,935
Laurens	5,225	59,668	69	1.0	11.2	2,838	2,483	5,322
Lee	1,516	21,834	68	0.9	16.1	968	387	1,355
Lexington	3,677	50,541	71	1.1	13.1	2,322	1,548	3,871
McCormick	2,032	24,866	62	0.9	14.3	710	1,032	1,742
Marion	1,548	23,737	67	1.0	14.7	742	871	1,613
Marlboro	742	10,289	82	1.8	7.8	742	581	1,322
Newberry	5,128	77,794	74	1.1	13.9	3,064	2,548	5,612
Oconee	2,322	29,673	68	0.9	13.7	1,580	581	2,161
Orangeburg	6,418	91,209	72	1.5	9.2	4,870	5,031	9,901
Pickens	2,967	29,832	71	0.8	13.4	1,322	903	2,225
Richland	2,935	40,218	72	1.0	13.9	1,484	1,419	2,903
Saluda	2,516	27,705	69	1.0	11.2	1,290	1,193	2,483
Spartanburg	4,677	65,182	68	1.2	11.8	3,129	2,419	5,547
Sumter	2,774	34,896	73	1.1	11.5	1,645	1,387	3,032
Union	4,032	52,604	68	1.0	13.0	2,064	1,967	4,032
Williamsburg	3,806	60,539	80	1.8	8.6	2,387	4,612	6,999
York	3,257	54,957	69	1.3	12.6	2,290	2,064	4,354
Total	140,459	1,932,725	71	1.3	10.9	93,693	83,888	177,581
% Change from 2021	16.0	8.4	0.0	0.0	-6.4	9.6	23.0	15.6

Table 7. Nonresident deer hunter and deer harvest statistics in South Carolina in 2023.

County	Number Hunters	Man/Days Hunted	Percent Success	Deer/Hunter	Days/Deer	Buck Harvest	Doe Harvest	Total Harvest
Abbeville	165	3,223	81	1.9	10.2	135	180	315
Aiken	345	5,367	74	1.1	14.3	165	210	375
Allendale	1,139	18,184	71	1.7	9.3	914	1,034	1,949
Anderson	90	1,259	50	1.0	14.0	30	60	90
Bamberg	705	9,129	78	1.9	7.0	570	735	1,304
Barnwell	435	6,161	76	1.7	8.4	450	285	735
Beaufort	90	1,739	83	1.0	19.3	75	15	90
Berkeley	300	3,313	75	1.2	9.2	180	180	360
Calhoun	165	1,244	73	1.0	7.5	120	45	165
Charleston	150	2,054	70	1.1	12.5	90	75	165
Cherokee	240	4,497	75	1.4	13.6	165	165	330
Chester	824	14,226	69	1.2	14.0	570	450	1,019
Chesterfield	510	7,240	79	1.6	8.9	465	345	810
Clarendon	45	1,244	67	1.7	16.6	45	30	75
Colleton	480	6,251	65	1.1	12.3	285	225	510
Darlington	90	1,334	83	2.0	7.4	75	105	180
Dillon	90	2,024	83	2.0	11.3	75	105	180
Dorchester	90	1,829	50	0.8	24.4	45	30	75
Edgefield	315	4,002	62	1.1	11.1	225	135	360
Fairfield	510	7,150	68	1.2	11.9	270	330	600
Florence	120	1,004	25	0.6	13.4	30	45	75
Georgetown	150	1,469	90	2.4	4.1	225	135	360
Greenville	195	1,769	77	0.9	9.8	90	90	180
Greenwood	135	2,069	44	1.2	12.5	60	105	165
Hampton	1,439	23,115	80	2.1	7.5	1,514	1,574	3,088
Horry	75	435	80	1.8	3.2	90	45	135
Jasper	450	6,401	80	1.8	8.1	450	345	795
Kershaw	435	7,360	76	1.7	10.2	435	285	720
Lancaster	480	6,206	78	1.4	9.4	405	255	660
Laurens	300	4,287	90	1.4	10.2	225	195	420
Lee	105	2,069	100	2.0	9.9	75	135	210
Lexington	75	690	60	0.2	46.0	0	15	15
McCormick	240	3,418	56	1.4	10.4	120	210	330
Marion	75	600	80	1.0	8.0	15	60	75
Marlboro	255	3,463	76	1.6	8.6	240	165	405
Newberry	420	4,257	64	0.8	12.9	180	150	330
Oconee	105	2,563	57	1.1	0.0	75	45	120
Orangeburg	510	6,206	82	1.6	7.5	420	405	824
Pickens	135	854	44	0.3	19.0	30	15	45
Richland	165	2,084	81	1.0	12.6	75	90	165
Saluda	90	585	50	0.8	7.8	45	30	75
Spartanburg	105	989	57	1.0	9.4	60	45	105
Sumter	150	1,154	60	0.7	11.0	60	45	105
Union	615	9,144	58	1.1	13.9	300	360	660
Williamsburg	345	4,452	69	1.4	9.0	240	255	495
York	315	4,947	76	1.2	12.7	270	120	390
Total	14,256	203,060	73	1.4	9.8	10,673	9,954	20,627
% Change from 2022	-6.6	-9.0	8.6	-3.0	12.6	-23.0	-27.0	-25.0

Table 8. Hunting effort (man/days) by county for successful and unsuccessful resident and nonresident deer hunters in South Carolina in 2023.

County	Residents (man/days)			Total Effort Residents	Nonresidents (man/days)			Total Effort Non-residents	Total Days
	Successful	Unsuccessful	Average		Successful	Unsuccessful	Average		
Abbeville	16.2	7.3	14.0	51,926	22.3	7.0	19.5	3,223	55,149
Aiken	18.5	12.0	16.5	68,183	19.1	5.7	15.6	5,367	73,550
Allendale	12.1	3.7	10.4	18,480	20.4	5.2	16.0	18,184	36,664
Anderson	15.8	7.6	14.1	74,406	15.0	13.0	14.0	1,259	75,665
Bamberg	19.4	13.2	18.1	32,187	15.4	3.9	13.0	9,129	41,316
Barnwell	12.9	6.8	11.9	19,158	15.1	11.3	14.2	6,161	25,319
Beaufort	12.3	5.9	10.8	14,611	11.2	60.0	19.3	1,739	16,350
Berkeley	15.6	7.3	13.2	52,345	13.0	5.2	11.1	3,313	55,658
Calhoun	13.8	8.4	12.5	30,703	8.8	4.3	7.5	1,244	31,948
Charleston	15.7	7.9	13.4	54,895	13.3	14.7	13.7	2,054	56,949
Cherokee	14.0	7.9	12.6	25,126	16.1	26.8	18.8	4,497	29,623
Chester	12.7	10.2	12.0	40,348	20.4	10.3	17.3	14,226	54,575
Chesterfield	18.9	6.7	17.2	35,543	15.6	8.9	14.2	7,240	42,783
Clarendon	15.0	9.6	13.4	32,027	40.0	3.0	27.7	1,244	33,271
Colleton	16.0	9.6	14.0	79,824	12.4	14.2	13.0	6,251	86,075
Darlington	20.3	7.6	17.1	36,993	17.2	3.0	14.8	1,334	38,327
Dillon	17.4	10.3	15.7	13,191	23.0	20.0	22.5	2,024	15,215
Dorchester	18.0	13.0	16.4	46,637	16.3	24.3	20.3	1,829	48,466
Edgefield	11.2	5.8	9.2	22,771	12.6	12.9	12.7	4,002	26,773
Fairfield	15.1	8.9	13.8	58,217	13.9	14.3	14.0	7,150	65,367
Florence	15.2	15.5	15.3	42,959	23.0	3.5	8.4	1,004	43,964
Georgetown	19.0	12.1	17.2	50,443	10.6	3.0	9.8	1,469	51,912
Greenville	14.1	8.6	12.2	54,861	10.3	5.0	9.1	1,769	56,630
Greenwood	14.8	11.7	13.6	37,606	18.0	13.2	15.3	2,069	39,675
Hampton	12.9	5.0	11.4	37,090	17.9	8.7	16.1	23,115	60,204
Horry	18.9	10.3	15.7	43,992	6.8	2.0	5.8	435	44,426
Jasper	13.7	5.9	12.3	21,384	15.9	7.7	14.2	6,401	27,785
Kershaw	16.9	9.3	14.4	48,701	20.0	7.4	16.9	7,360	56,062
Lancaster	15.8	4.5	13.3	32,574	13.9	9.6	12.9	6,206	38,780
Laurens	12.0	10.2	11.4	59,668	14.4	13.5	14.3	4,287	63,955
Lee	16.6	9.7	14.4	21,834	19.7		19.7	2,069	23,903
Lexington	13.7	13.9	13.7	50,541	14.3	1.5	9.2	690	51,230
McCormick	15.1	7.7	12.2	24,866	18.0	9.4	14.3	3,418	28,284
Marion	18.7	8.6	15.3	23,737	7.5	10.0	8.0	600	24,337
Marlboro	15.4	6.8	13.9	10,289	16.5	4.0	13.6	3,463	13,752
Newberry	17.7	8.0	15.2	77,794	10.4	9.7	10.1	4,257	82,051
Oconee	13.0	12.4	12.8	29,673	36.8	8.0	24.4	2,563	32,236
Orangeburg	16.3	8.8	14.2	91,209	13.1	7.8	12.2	6,206	97,415
Pickens	10.7	8.5	10.1	29,832	9.3	4.0	6.3	854	30,687
Richland	14.5	11.6	13.7	40,218	15.0	2.0	12.6	2,084	42,301
Saluda	12.3	8.2	11.0	27,705	8.0	5.0	6.5	585	28,290
Spartanburg	17.1	7.1	13.9	65,182	10.8	7.7	9.4	989	66,172
Sumter	14.1	8.5	12.6	34,896	5.8	10.5	7.7	1,154	36,050
Union	15.0	8.8	13.0	52,604	16.3	12.9	14.9	9,144	61,748
Williamsburg	17.7	8.6	15.9	60,539	16.1	5.7	12.9	4,452	64,991
York	19.1	11.8	16.9	54,957	14.1	21.0	15.7	4,947	59,904
Total	15.5	9.2	13.8	1,932,725	16.0	9.6	14.2	203,060	2,135,786
% Change from 2022	-6.0	-6.0	-6.0	8.4	0.0	0.0	0.0	-9.0	6.3

Table 9. Estimated deer harvest by weapon type in South Carolina in 2023.

	Rifle	Bow & Arrow	Shotgun	Muzzle-loader	Crossbow	Handgun	Total
Number of Deer Harvested	165,869	8,918	13,476	3,765	5,945	198	198,171
Percent Total Deer Harvest	83.7	4.5	6.8	1.9	3.0	0.1	100.0
Percent Hunter Success With Weapon	68.3	27.5	37.5	23.8	26.1	15.4	NA*

* Total is not applicable because individual hunters take deer with multiple weapons.

Table 10. Number of hunters using each type of weapon in South Carolina in 2023.

	Rifle	Bow & Arrow	Shotgun	Muzzle-loader	Crossbow	Handgun
Residents	129,363	26,687	21,912	11,939	16,012	4,354
Nonresidents	13,258	1,739	1,098	1,896	1,440	157
Total	142,621	28,426	23,009	13,835	17,452	4,511

Total across weapons not given because hunters use multiple weapons. Total hunters = 154,715.

Table 11. Weapons utilization (percent) among deer hunters in South Carolina in 2023.

	Rifle	Bow & Arrow	Shotgun	Muzzle-loader	Crossbow	Handgun
Residents	92.1	19.0*	15.6*	8.5*	11.4	3.1*
Nonresidents	93.0	12.2	7.7	13.3	10.1	1.1
Total	92.3	17.8	14.2	9.3	11.2	2.9

* Significant difference in weapons use category based on residency.

Table 12. Weapons preference (percent) among deer hunters in South Carolina in 2023.

	Rifle	Bow & Arrow	Shotgun	Muzzle-loader	Crossbow	Handgun	Total
Residents	79.1	11.8*	5.1*	0.9*	2.6	0.4*	100.0
Nonresidents	85.6	7.1	1.9	2.5	2.9	0.0	100.0
Total	80.4	10.9	4.5	1.2	2.7	0.3	100.0

* Significant difference in weapons preference category based on residency.

Table 13. Estimated wild hog and coyote harvest by deer hunters in South Carolina in 2023.
Rank is by per unit area harvested.

County	Hog Harv.	Harv./ Mile ²	% Change from 2022	2023 Rank	2022 Rank	Coyote Harv.	Harv./ Mile ²	% Change from 2022	2023 Rank	2022 Rank
Abbeville	1,870	5.36	33.9	3	3	419	1.20	-44.3	13	6
Aiken	613	0.78	-29.8	30	24	935	1.20	10.6	13	22
Allendale	1,999	5.91	281.6	2	15	613	1.81	64.0	4	21
Anderson	1,483	4.33	-26.1	4	1	999	2.92	76.9	1	8
Bamberg	548	1.78	34.5	13	19	451	1.47	74.5	10	25
Barnwell	484	1.10	-20.9	26	17	419	0.95	-35.4	22	13
Beaufort	193	0.84	121.6	29	37	0	0.00	-100.0	46	41
Berkeley	2,031	2.29	125.2	12	27	484	0.55	24.6	37	39
Calhoun	451	1.52	-65.5	17	2	226	0.76	-65.5	29	5
Charleston	1,225	2.72	180.7	8	28	290	0.64	-59.9	33	9
Cherokee	0	0.00	-100.0	45	20	355	1.45	-3.1	11	12
Chester	645	1.37	-26.1	19	10	709	1.51	-0.2	9	11
Chesterfield	451	0.78	-29.5	30	25	451	0.78	41.0	28	35
Clarendon	613	1.32	-19.0	20	13	387	0.83	26.6	26	32
Colleton	1,838	2.34	250.8	11	34	935	1.19	111.0	16	34
Darlington	1,451	3.24	162.4	6	21	548	1.23	161.6	12	37
Dillon	32	0.10	-77.8	44	36	161	0.48	-50.8	39	24
Dorchester	613	1.30	-29.8	21	11	516	1.09	-7.9	19	18
Edgefield	161	0.42	38.5	34	40	258	0.67	-45.5	31	16
Fairfield	774	1.29	89.9	22	33	613	1.02	37.0	21	29
Florence	1,064	1.71	128.5	15	30	419	0.67	-13.3	31	27
Georgetown	1,096	1.76	135.4	14	30	226	0.36	88.0	42	46
Greenville	161	0.35	38.5	37	41	419	0.91	-22.8	24	18
Greenwood	838	2.62	37.2	10	9	193	0.61	-47.2	35	20
Hampton	3,611	7.11	153.2	1	4	870	1.71	35.1	6	15
Horry	484	0.58	454.0	32	45	290	0.35	42.4	43	45
Jasper	1,547	3.20	112.7	7	16	355	0.73	56.7	30	37
Kershaw	709	1.26	121.6	23	35	355	0.63	74.1	34	42
Lancaster	129	0.31	-55.7	38	32	193	0.46	10.8	41	40
Laurens	484	0.97	-27.7	28	18	870	1.75	-6.5	5	7
Lee	64	0.19	10.8	41	43	322	0.94	-66.4	23	2
Lexington	64	0.15	240.0	42	39	741	1.69	124.0	7	28
McCormick	870	2.63	49.6	9	12	548	1.65	34.5	8	16
Marion	580	1.71	-16.9	15	7	97	0.29	10.8	44	43
Marlboro	484	1.10	-7.7	26	23	64	0.15	-40.9	45	44
Newberry	193	0.39	-48.9	36	29	548	1.10	39.5	18	26
Oconee	613	1.38	-43.1	18	5	1,096	2.47	310.9	3	33
Orangeburg	97	0.12	-33.5	43	42	387	0.49	-27.5	38	31
Pickens	419	1.22	-37.4	24	8	161	0.47	-69.2	40	10
Richland	1,870	3.52	56.7	5	6	322	0.61	-41.2	35	23
Saluda	161	0.54	454.0	33	45	322	1.07	-51.8	20	4
Spartanburg	129	0.31	-11.4	38	38	1,064	2.56	-8.6	2	1
Sumter	161	0.30	-70.8	40	26	613	1.16	63.7	17	30
Union	161	0.40	-67.4	35	22	484	1.20	-15.2	13	14
Williamsburg	903	1.12	-27.9	25	14	645	0.80	58.3	27	36
York	0	0.00	-100.0	45	44	387	0.89	-63.1	25	3
Total	34,367	1.57	27.5	NA	NA	21,761	0.99	0	NA	NA
	(+ -2,945)					(+ -1,552)				

95% Confidence Interval for harvest

Ranking is based on harvest per square mile

Table 14. Number of deer-vehicle collisions reported by the South Department of Public Safety 2019-2023.

County	2019	2020	2021	2022	2023*
Abbeville	8	4	50	59	52
Aiken	93	95	276	219	197
Allendale	19	11	31	27	12
Anderson	97	69	316	345	371
Bamberg	27	21	43	30	37
Barnwell	15	21	43	44	38
Beaufort	130	136	169	183	216
Berkeley	115	109	193	154	155
Calhoun	31	24	64	54	38
Charleston	248	249	280	244	256
Cherokee	41	31	70	101	103
Chester	48	46	114	119	114
Chesterfield	37	49	90	94	129
Clarendon	19	16	73	58	83
Colleton	51	39	132	88	79
Darlington	133	106	129	177	173
Dillon	71	74	63	78	99
Dorchester	60	54	134	120	118
Edgefield	11	2	35	28	56
Fairfield	33	27	81	67	71
Florence	176	136	188	183	191
Georgetown	31	32	59	56	58
Greenville	162	132	334	308	335
Greenwood	19	17	123	116	117
Hampton	18	17	51	27	21
Horry	340	286	366	349	455
Jasper	64	62	115	108	94
Kershaw	37	37	136	122	131
Lancaster	40	45	132	131	165
Laurens	14	19	174	153	149
Lee	15	14	94	71	83
Lexington	33	30	212	185	183
McCormick	0	0	10	9	11
Marion	63	44	71	65	89
Marlboro	85	75	155	136	169
Newberry	13	6	75	74	78
Oconee	26	11	75	78	86
Orangeburg	148	132	257	242	224
Pickens	50	35	131	122	136
Richland	54	58	255	228	200
Saluda	5	2	32	37	37
Spartanburg	169	142	389	458	485
Sumter	25	20	128	125	168
Union	20	27	33	47	53
Williamsburg	85	68	81	101	100
York	107	106	301	304	316
Total	3,086	2,736	6,363	6,124	6,531

* Preliminary figures

Table 15. Average live body weights of deer from South Carolina counties, based on historic data

COUNTY	Males				Females			
	1.5 Years Old		2.5+ Years Old		1.5 Years Old		2.5+ Years Old	
	N	Avg. Wt.	N	Avg. Wt.	N	Avg. Wt.	N	Avg. Wt.
Abbeville	1,390	111.7	484	145.9	466	90.4	747	102.7
Aiken	2,667	121.6	1,485	162.6	808	94.9	1,522	109.6
Allendale	6,175	108.9	3,333	146.0	2,503	87.7	5,606	100.8
Anderson	30	121.9	17	148.1	4	92.5	8	113.0
Bamberg	2,414	111.9	1,113	142.4	884	91.4	1,721	103.9
Barnwell	1,478	119.1	695	156.6	601	94.3	1,071	106.9
Beaufort	952	101.6	1,236	135.2	690	86.7	1,818	99.8
Berkeley	3,162	100.6	4,198	127.3	1,086	83.4	3,991	97.2
Calhoun	1,588	110.2	633	144.1	312	91.4	943	104.6
Charleston	1,256	97.9	2,088	123.3	422	83.3	1,581	95.8
Cherokee	1	80.0	1	139.0	9	77.8	26	89.6
Chester	1,445	105.9	963	140.1	470	87.4	1,091	99.4
Chesterfield	79	119.4	140	152.5	27	93.5	1,128	99.8
Clarendon	13	101.3	29	152.5	42	89.6	87	103.0
Colleton	5,822	105.6	6,908	135.5	3,279	87.9	8,920	100.4
Darlington	334	113.6	273	153.3	216	92.8	573	105.2
Dillon	74	112.8	46	138.5	13	92.8	50	103.9
Dorchester	1,868	107.2	2,205	137.0	653	88.0	2,055	103.0
Edgefield	556	100.9	334	133.4	159	84.6	306	96.9
Fairfield	2,048	102.1	1,444	136.5	761	86.3	2,021	99.2
Florence	696	110.8	459	139.2	198	89.6	621	102.8
Georgetown	1,881	98.7	2,281	126.1	668	85.6	1,961	97.6
Greenville	7	122.1	9	149.9	7	79.3	16	98.4
Greenwood	1,158	111.4	537	145.1	313	90.2	629	103.0
Hampton	6,103	106.7	4,710	140.0	3,034	87.2	7,236	100.5
Horry	302	96.1	311	126.1	129	79.2	301	91.3
Jasper	3,385	101.8	4,691	135.4	2,142	84.6	5,948	96.9
Kershaw	603	108.9	588	144.6	251	89.6	758	102.9
Lancaster	472	113.1	246	153.3	213	91.4	441	105.2
Laurens	240	104.7	181	132.9	107	87.3	238	96.9
Lee	472	119.6	187	151.3	162	96.6	330	108.5
Lexington	20	120.8	9	164.8	6	101.3	15	115.8
McCormick	2,354	101.5	1,056	134.5	877	85.3	1,745	97.3
Marion	690	108.5	501	138.7	256	88.6	630	98.7
Marlboro	106	115.0	62	149.8	30	95.0	70	107.8
Newberry	143	97.1	100	135.6	85	86.0	171	92.7
Oconee	74	113.1	58	152.6	33	85.3	39	99.6
Orangeburg	2,293	112.5	1,375	145.0	686	90.8	1,684	103.4
Pickens	47	109.1	41	145.4	18	79.9	48	100.5
Richland	1,320	106.1	1,274	145.2	651	92.7	1,879	106.3
Saluda	100	115.8	40	148.0	25	93.6	34	105.2
Spartanburg	34	109.3	22	142.2	13	95.0	31	98.8
Sumter	666	111.3	353	142.1	188	94.4	509	105.3
Union	958	101.7	608	135.8	439	87.9	761	97.8
Williamsburg	469	112.5	559	143.3	150	91.4	478	106.0
York	13	96.9	30	143.9	20	78.7	41	93.9
Total	57,958	107.3	47,913	137.9	24,106	88.0	61,879	100.6

Table 16. Antler characteristics of male deer from South Carolina counties, based on historic data

COUNTY	1.5 Years Old Males			2.5+ Years Old Males			% 1.5 Bucks in Antlered Harvest
	Number Points	Percent Spikes	Outside Spread	Number Points	Percent Spikes	Outside Spread	
Abbeville	4.2	32		7.2	2		74
Aiken	4.4	28	8.7	7.4	1	14.7	64
Allendale	4.0	36	7.7	7.2	3	13.7	65
Anderson	4.7	28		6.8	0		63
Bamberg	4.0	34	7.6	6.7	4	12.5	68
Barnwell	4.6	21	8.7	7.1	2	13.9	68
Beaufort	3.1	58	7.4	6.4	9	13.0	44
Berkeley	3.0	62	6.6	5.8	12	11.5	43
Calhoun	4.0	33	7.4	7.0	3	13.2	72
Charleston	2.8	69	6.2	5.4	15	10.6	38
Cherokee				7.0	0		50
Chester	3.4	47	8.7	6.7	4	13.9	61
Chesterfield	4.5	21	8.6	7.2			61
Clarendon	2.8	58	6.2	7.7	3	12.9	31
Colleton	3.3	50	6.9	6.4	7	11.7	46
Darlington	3.1	57	7.4	6.7	5	13.7	55
Dillon	3.2	54	8.1	5.7	9	11.6	62
Dorchester	3.3	53	6.6	6.0	9	11.1	46
Edgefield	3.3	50		6.6	5		63
Fairfield	3.1	55	7.5	6.4	6	13.8	59
Florence	3.4	47	7.4	6.1	9	12.1	60
Georgetown	2.8	65	6.6	5.6	13	11.0	45
Greenville	4.7	14		7.6	0		44
Greenwood	3.9	34		6.7	3		68
Hampton	3.9	39	7.7	6.9	4	13.0	56
Horry	3.0	58	6.8	6.2	8	12.1	49
Jasper	3.3	52	7.0	6.6	6	12.8	42
Kershaw	3.6	47	7.7	6.9	7	12.3	51
Lancaster	4.3	27	6.7	7.4	0	15.0	66
Laurens	3.2	53	6.7	6.0	10	13.7	57
Lee	4.3	25	8.4	6.7	2	12.9	72
Lexington	4.1	30	9.1	7.3	0	15.7	69
McCormick	3.5	47		6.8	4		69
Marion	3.3	52	7.3	6.2	10	12.4	58
Marlboro	3.1	53	7.0	6.4	10	12.6	63
Newberry	2.8	54		6.3	8	13.3	59
Oconee	3.4	52		7.3	3		56
Orangeburg	3.8	38	7.6	6.8	5	12.6	63
Pickens	4.0	43		7.2	2		53
Richland	3.3	52	7.3	6.8	5	13.5	51
Saluda	4.0	32	9.0	6.9	0	10.8	71
Spartanburg	4.0	33	6.1	7.1	0		61
Sumter	3.7	41	7.7	6.6	5	12.5	65
Union	3.3	51	7.2	6.6	5	13.6	61
Williamsburg	3.6	43	7.6	6.8	5	12.6	46
York	3.1	60	5.3	7.4	0	13.3	30
Total	3.6	44	7.4	6.5	7	12.4	55

Figure 1. South Carolina Department of Natural Resources 2023 Deer Hunter Survey.

January, 2024

Dear Sportsman:

White-tailed deer are one of the most important game species in South Carolina. Therefore, it is important that this species be monitored for population status and harvesting activities. Wildlife resource managers require current and accurate information about deer harvests to aid in successfully managing this important natural resource and to optimize future hunting potential. To obtain this needed data, the Department of Natural Resources (SCDNR) is conducting a survey of licensed Big Game Permit holders.

You are one of a group of randomly selected hunters asked to participate in this survey. To draw accurate conclusions it is very important that you complete the survey and return it. Please take time to read each question. Even if you did not hunt deer last season please indicate this by answering the appropriate questions and moving on to the next set of questions.

In addition to the questions concerning your deer hunting activities, there are questions concerning the weapons that you used to harvest deer and questions concerning the number of wild hogs and coyotes that you may have harvested. Not only is this data important to DNR game biologists, many hunters are interested in this type of information so it is important that you answer these questions too.

Please note that complete confidentiality will be given to you. There is no number on your survey form, therefore, there is no way to link your responses to you. Keep in mind that the primary purpose of the survey is to determine the deer harvest in South Carolina and not to determine whether game laws are observed. By accurately answering the survey questions you will enable DNR biologists to better manage the white-tailed deer resource for you and other citizens of the state.

Please keep in mind that in order to reduce costs, this is the only 2023 Deer Hunter Survey form you will receive. There will be no reminders or second surveys sent to individuals that do not respond to this initial survey. Therefore, it is very important that you take a few minutes to complete this survey and mail it. Return postage is prepaid.

Results of this survey will be posted on the DNR web site once completed (hopefully by June). The results from the 2022 survey can be found at www.dnr.sc.gov/wildlife/deer/2022/DeerHarvestReport.html

Thank you for your assistance.

Charles Ruth
Wildlife Biologist
Big Game Program Coordinator

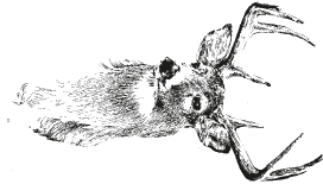
PLEASE MAIL YOUR SURVEY AFTER SEPARATING THIS HALF FROM THE SIDE ON WHICH YOUR ANSWERS HAVE BEEN ENTERED. NO POSTAGE IS NECESSARY.

If you have questions regarding this survey, please call 803-734-3886 or write 2023 Deer Hunter Survey, SCDNR, P.O. Box 167, Columbia, SC 29202.

The South Carolina Department of Natural Resources prohibits discrimination on the basis of race, color, gender, national origin, disability, religion or age. Direct all inquiries to the Office of Human Resources, P.O. Box 167, Columbia, SC 29202

23-14021

♻️ Printed on Recycled Paper

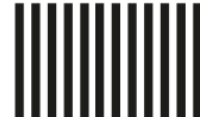


**DEER HUNTER SURVEY
S.C. DEPARTMENT OF NATURAL RESOURCES
PO BOX 167
COLUMBIA SC 29202-9976**

POSTAGE WILL BE PAID BY ADDRESSEE

BUSINESS REPLY MAIL

FIRST CLASS MAIL PERMIT NO 1371 COLUMBIA SC



NO POSTAGE
NECESSARY
IF MAILED
IN THE
UNITED STATES

Figure 1 cont.

2023 South Carolina Deer Hunter Survey

1. Did you hunt deer in SC this past season (2023)? 1. Yes 2. No
If you answered No to this question please go to question # 9.

2. Did you harvest any deer in SC this past season? 1. Yes 2. No

3. Even if you did not harvest any deer, please record the SC counties you deer hunted and the number of days hunted in each county this past season (2023). **Please begin with the county you hunted the most.** If you harvested deer please record the number of bucks and does taken in each county. A day of hunting is defined as any portion of the day spent afield. Please do not give ranges (i.e. 5-10), rather provide absolute numbers (i.e. 5). Provide information only for yourself- not friends, relatives, or other hunt club members.

	SC Counties You Deer Hunted	# of Days Hunted	# of Deer Harvested	
			#Bucks	#Does
1.				
2.				
3.				
4.				

If you did not harvest any deer in SC in 2023 please go to question # 6.

4. Please record the number of deer taken by month of season in SC last season (2023).

August	September	October	November	December	January

5. Please record the number of deer taken with each weapon in SC last season (2023).

Rifle	Bow	Shotgun	Muzzleloader	Crossbow	Handgun

6. Please circle **all** the weapons that you hunted deer with in 2023.

1. Rifle 2. Bow 3. Shotgun 4. Muzzleloader 5. Crossbow 6. Handgun

7. Please circle the **one** weapon that you **prefer to hunt deer with**.

1. Rifle 2. Bow 3. Shotgun 4. Muzzleloader 5. Crossbow 6. Handgun

8. Compared to past years, how would you describe the number of deer in the area that you hunt most often? (*Circle one*)

1. Increasing 2. About the same 3. Decreasing

9. If you **harvested** any wild hogs or coyotes while hunting in SC in 2023, please complete the box below.

If you did not harvest any hogs or coyotes please go to question # 10.

	County	# of Hogs		County	# of Coyotes
1.			1.		
2.			2.		

10. Are you a resident of SC? 1. Yes 2. No

11. If yes, which county? _____

Separate and return this portion of the survey. Postage is prepaid. Please do not staple this form.



COMPLETE YOUR HUNTER SURVEY

Help Manage SC's Deer Herd



DEER HUNTER SURVEY
 SCDNR
 P.O. BOX 167
 COLUMBIA, SC 29202-0167
 www.dnr.sc.gov

PRESORTED
 FIRST CLASS
 US POSTAGE
 PAID
 COLUMBIA SC
 PERMIT 1156

Figure 2. Percent of deer harvested by month of season in South Carolina in 2023. Note that December includes January 1 which is the last day of deer season.

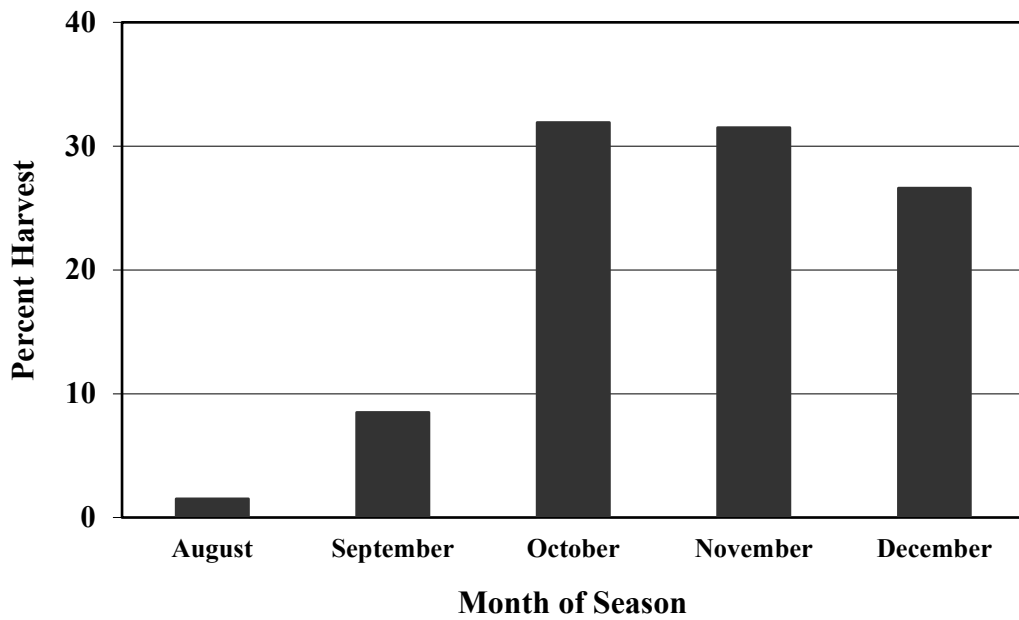


Figure 3. Percent of female deer conceiving by week in South Carolina, based on historic data.

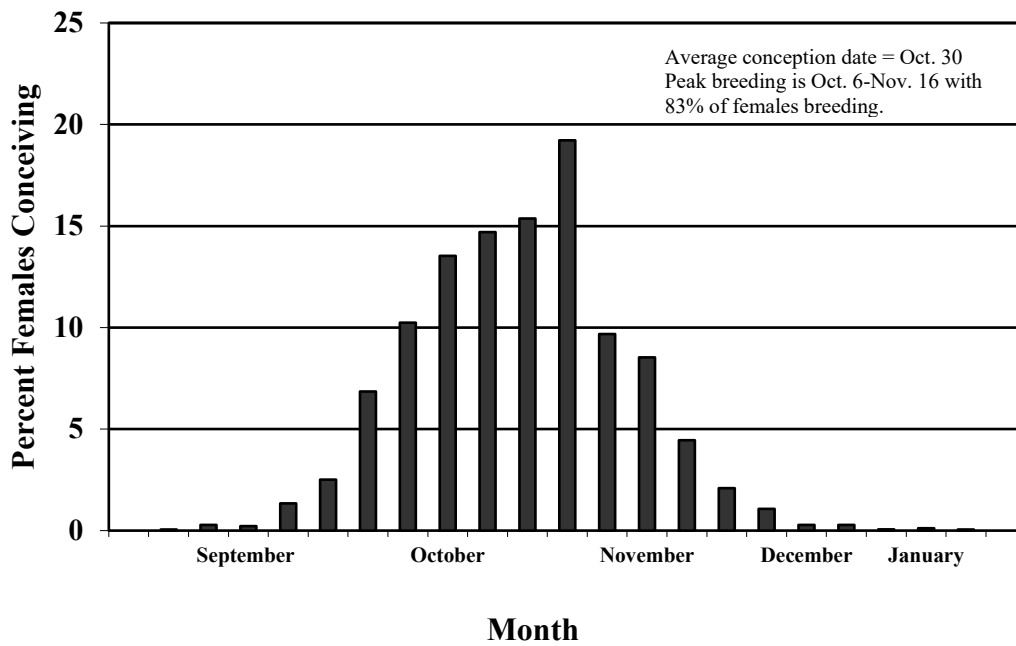


Figure 4. Estimated deer harvest in South Carolina 1972-2023.

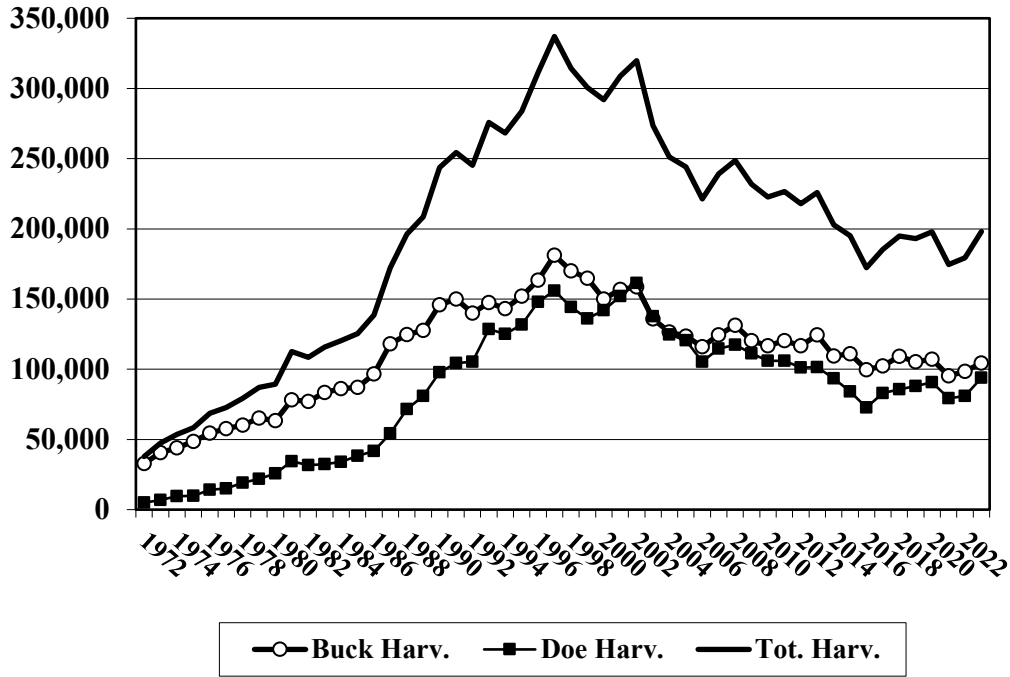


Figure 5. Estimated South Carolina deer population 1972-2023 based on population reconstruction modeling. Note that antlerless deer includes male fawns (button bucks).

