

Tropical Storm Colin (39 kts, 1003 mb) at 6:15 AM, 7 June, 2016.
Image Courtesy of NRL Monterey

Tropical Storm Colin

June 7, 2016

South Carolina Department of Natural Resources
Land, Water and Conservation Division
South Carolina State Climatology Office

Compiled by Mark Malsick

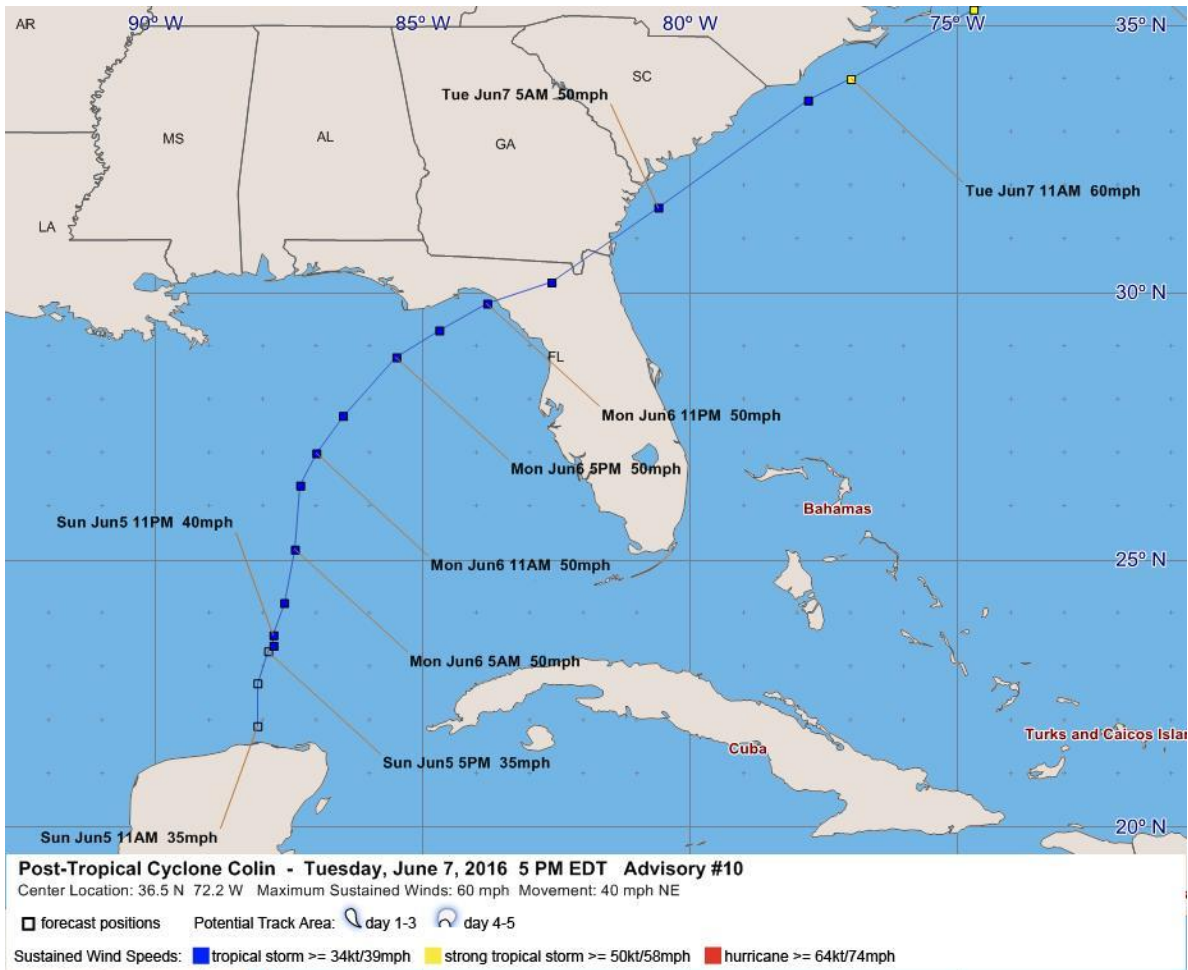
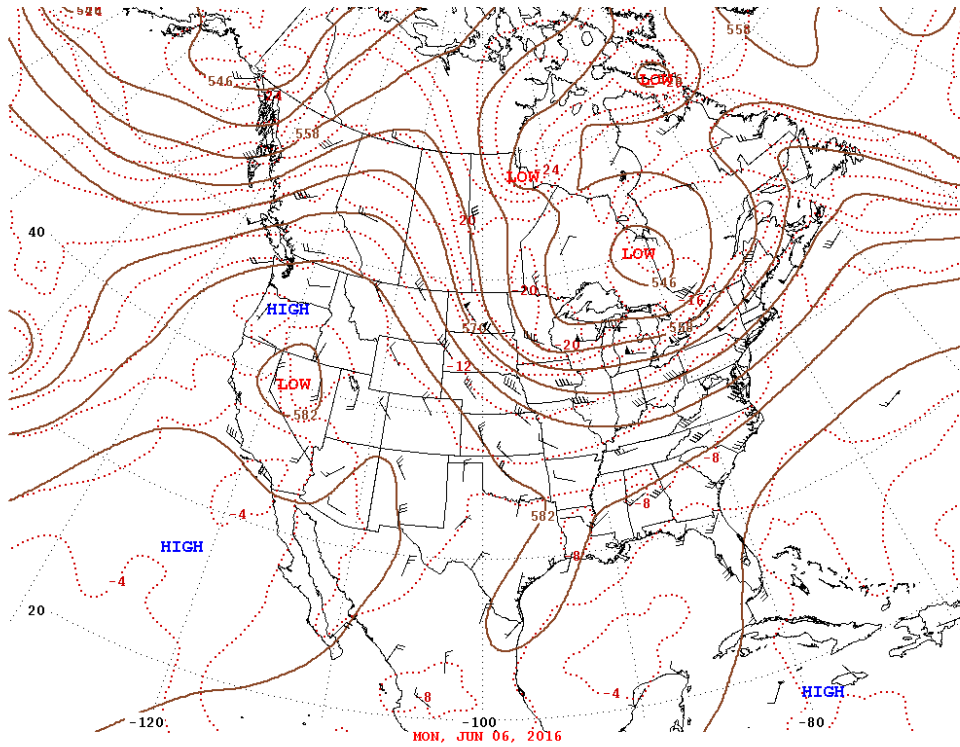


Figure 1. Tropical Storm Colin track

EVENT SUMMARY:

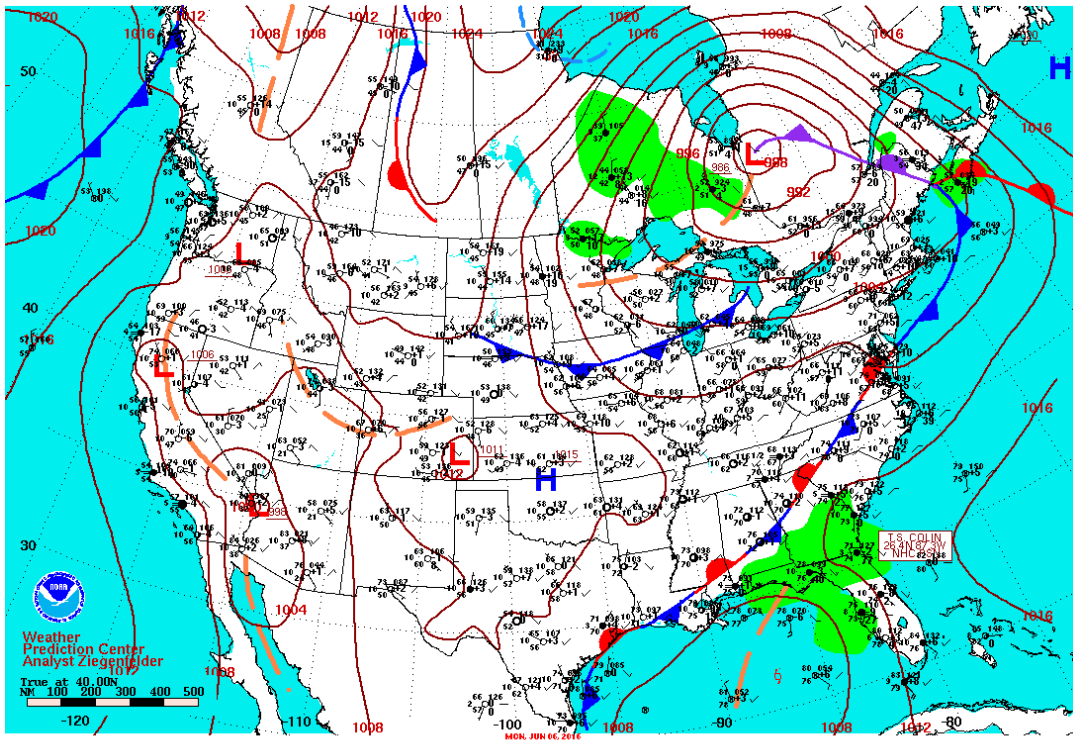
Tropical Storm Colin developed from an easterly tropical wave that rolled off the west coast of Africa and entered the Caribbean Sea on 1 June. The wave intensified to a tropical depression off the Yucatan Peninsula by 5 June. From the Yucatan, the depression tracked northward across the Gulf of Mexico becoming Tropical Storm Colin, reaching a peak intensity of 45 knots before making landfall on the northern Florida Gulf Coast early on 7 June and emerging over the Atlantic later that day.

A poorly organized Tropical Storm Colin quickly tracked parallel to the South Carolina Coast passing 35 miles southeast of the coast guided by a deep trough to the west and the Sub-tropical ridge to the east.(Figs. 2, 3) An expansive precipitation shield preceded the storm’s center drenching northern Florida and southeastern Georgia with 4-17 inches of rain. (Fig. 4) South Carolina rainfall totals are listed below. The national Hurricane Center downgraded Colin to an extratropical low as it tracked northeast out over the open Atlantic Ocean.



500-millibar Height Contours at 7:00 A.M. E.S.T.

Figure 2. 500 mb heights 6 June. Courtesy NOAA/WPC.



Surface Weather Map and Station Weather at 7:00 A.M. E.S.T.

Figure 3. Surface Analysis 7:00 6 June, 2016. Map courtesy NOAA/WPC

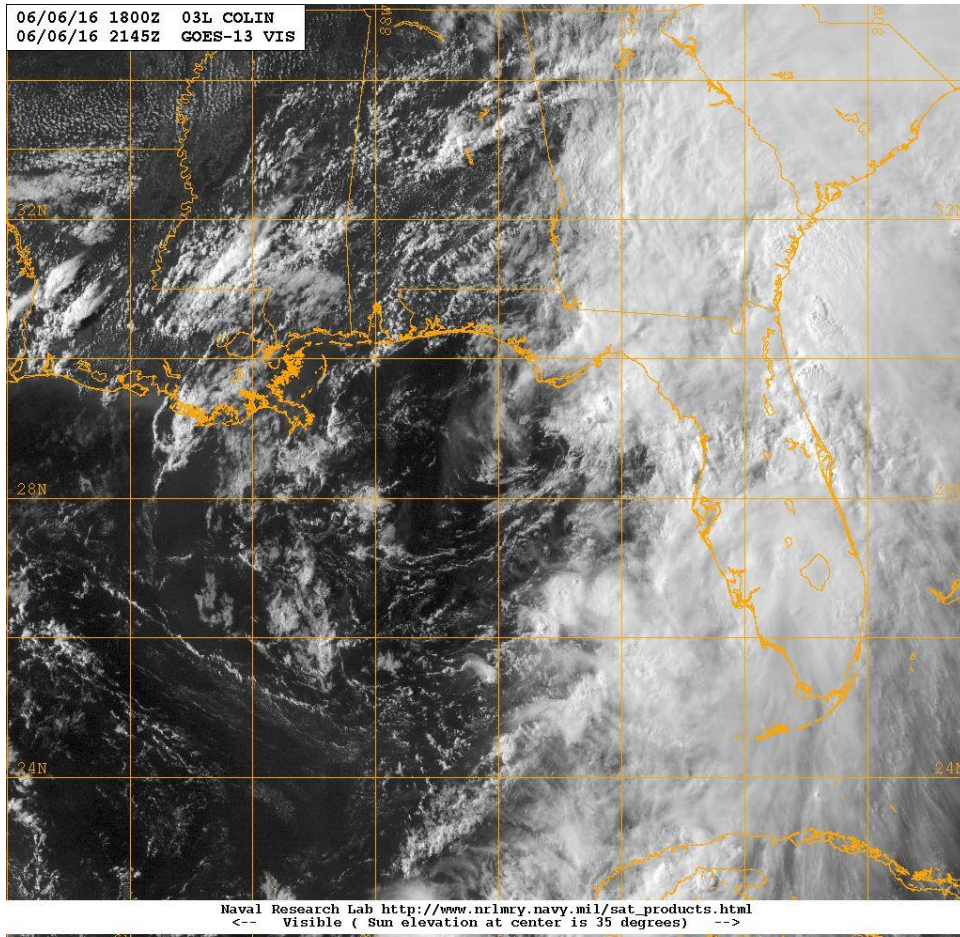


Figure 4. Tropical Storm Colin prior to Florida Landfall 4:45 PM, 6 June. Courtesy NRL Monterey

TROPICAL STORM COLIN'S EFFECTS:

Colin produced heavy rainfall and an EF-1 tornado over Florida and a 2-3 foot coastal storm surge from Apalachicola to Tampa Bay. Colin's effects to South Carolina were minimal. Minor beach erosion and heavy rain affected Beaufort, Charleston, Hampton and Jasper Counties. Flash flooding made numerous roads in those counties impassable.

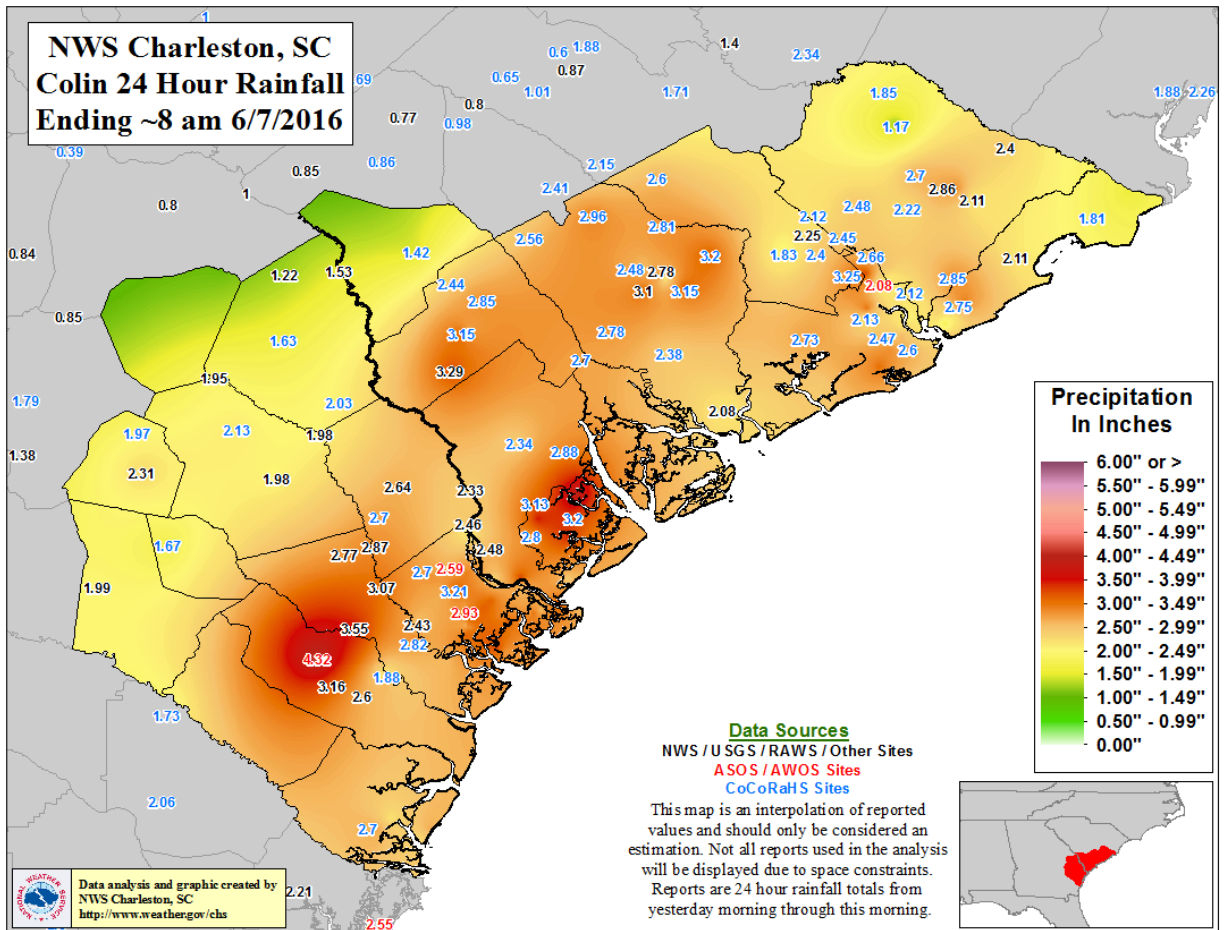


Figure 5. Tropical Storm Colin rainfall totals. Courtesy NWS-Forecast Office Charleston

A. Rainfall (inches):

Hinesville, GA	4.32	Georgetown 5 NNE	1.97
Okatie 6 ENE	4.00	Galivants Ferry	2.22
Bluffton 6 WNW	3.53	Loris 1 ENE	1.94
Elba Island	3.34	Surfside Beach 1 NE	1.83
FT. Pulaski	3.32	North Myrtle Beach	1.66
Furman 1 SW	3.29	Waccamaw River	1.50
Cottageville 3 NNW	3.20	Red Hill 5 ENE	1.50
Johns Island 9 SE	3.07	Marion 3 E	1.75
Charleston 6 NW	3.05	Kingstree 10 NW	1.78
Pawley's Island 4 SW	2.33		

B. Recorded peak winds:

Airports:

Charleston AFB KCHS: 12 KT from 240⁰ at 9:34 AM 6/6/16

Savannah Intl. KSAV 14 KT from 170⁰ at 8:49 AM 6/6/16

Official Coastal/Marine Sites:

NDBC 41004 Edisto Buoy 35 KT from 180⁰ at 4:40 AM 6/7/16

NDBC 41033 Fripp Nearshore 21 KT from 220⁰ at 9:08 PM 6/6/16

CMAN FBIS1 Folly Beach 14 KT from 213⁰ at 11:50 PM 6/6/16

C. Storm Surge:

Charleston 1.28 foot storm surge

Fort Pulaski, GA 1.53 foot storm surge

ACKNOWLEDGEMENTS:

Special thanks to the National Oceanic and Atmospheric Administration and its many divisions for the wealth of weather and climate data made available to prepare this report. Specific thanks to:

- National Hurricane Center, Miami, Florida
- Weather Prediction Center
- National Weather Service Office, Charleston, South Carolina
- National Weather Service Office, Wilmington, North Carolina

Additional thanks to the Naval Research Laboratory Monterey's Marine Meteorology Division for the well-cataloged library of satellite imagery used for this report.