

List of Tables

Table	Title	Page
1	Estimated statewide deer harvest in South Carolina in 2008.....	16
2	County rankings based on deer harvest per unit area in South Carolina 2008	17
3	County rankings based on total deer harvest in South Carolina in 2008.....	18
4	Estimated deer harvest on Wildlife Management Areas in South Carolina in 2008	19
5	Hunter opinion (percent) regarding the number of deer in the area hunted most often in South Carolina in 2008 compared to previous years	19
6	The type of hunter (still, dog, or both) that hunters in South Carolina consider themselves to be by county in 2008.....	20
7	Resident deer hunter and deer harvest statistics in South Carolina in 2008.....	21
8	Non-resident deer hunter and deer harvest statistics in South Carolina in 2008	22
9	Hunting effort (man/days) by county for successful and unsuccessful resident and non-resident hunters in South Carolina in 2008.....	23
10	Estimated deer harvest by weapon type in South Carolina in 2008	24
11	Number of deer hunters using each type of weapon in South Carolina in 2008	24
12	Weapons utilization (percent) among deer hunters in South Carolina in 2008	22
13	Weapons preference (percent) among deer hunters in South Carolina in 2008	24
14	Estimated wild hog and coyote harvest by deer hunters in South Carolina in 2008	25
15	Number of deer-vehicle collisions reported by the South Carolina Department of Transportation 2002-2008	26
16	Average live body weights of deer from South Carolina counties, based on historic data.....	27
17	Antler characteristics of male deer from South Carolina counties, based on historic data.....	28

List of Figures

Figure	Title	Page
1	South Carolina Department of Natural Resources 2008 Deer Hunter Survey	29-30
2	Percent of female deer conceiving by week in South Carolina, based on historic data.....	31
3	Percent of deer harvested by week of hunting season in South Carolina, based on historic data.....	31
4	Estimated deer harvest in South Carolina, 1972-2008	32
5	Estimated South Carolina deer population 1972-2008, based on population reconstruction modeling	32

Table 1. Estimated statewide deer harvest in South Carolina in 2008.

County	Acres*	Square Miles	Buck Harvest	Doe Harvest	Total Harvest	Harvest Rates		% Change from 2007
						Ac/Deer	Deer/Mi. ²	
Abbeville	223,113	349	3,002	2,639	5,641	39.6	16.2	19.5
Aiken	500,546	782	3,456	2,345	5,801	86.3	7.4	16.9
Allendale	216,455	338	3,052	3,256	6,308	34.3	18.7	16.3
Anderson	219,068	342	2,641	2,364	5,005	43.8	14.6	15.2
Bamberg	196,573	307	3,098	3,046	6,144	32.0	20.0	-4.6
Barnwell	281,764	440	3,005	3,153	6,158	45.8	14.0	6.6
Beaufort	147,441	230	1,037	1,114	2,151	68.6	9.3	25.3
Berkeley	567,530	887	4,595	2,828	7,422	76.5	8.4	19.1
Calhoun	190,584	298	1,814	1,973	3,787	50.3	12.7	-17.3
Charleston	288,732	451	3,177	3,205	6,382	45.2	14.1	20.1
Cherokee	156,664	245	1,737	1,720	3,457	45.3	14.1	-2.5
Chester	300,589	470	2,932	3,345	6,278	47.9	13.4	2.1
Chesterfield	372,478	582	2,712	1,806	4,517	82.5	7.8	5.2
Clarendon	298,087	466	3,845	3,341	7,186	41.5	15.4	26.5
Colleton	502,666	785	5,847	5,500	11,347	44.3	14.4	20.1
Darlington	286,228	447	1,327	1,200	2,527	113.3	5.6	12.2
Dillon	214,069	334	1,102	657	1,759	121.7	5.3	2.6
Dorchester	302,717	473	3,014	2,542	5,557	54.5	11.7	13.7
Edgefield	246,543	385	2,183	1,970	4,154	59.4	10.8	-6.0
Fairfield	384,607	601	3,459	3,852	7,311	52.6	12.2	-19.1
Florence	397,888	622	3,578	3,146	6,724	59.2	10.8	12.9
Georgetown	399,638	624	2,737	2,465	5,202	76.8	8.3	24.5
Greenville	294,257	460	1,801	1,297	3,098	95.0	6.7	-17.9
Greenwood	204,400	319	2,225	2,403	4,628	44.2	14.5	1.0
Hampton	324,840	508	5,180	4,065	9,245	35.1	18.2	28.7
Horry	533,336	833	2,947	2,334	5,281	101.0	6.3	5.0
Jasper	309,889	484	2,835	3,253	6,088	50.9	12.6	10.2
Kershaw	360,485	563	3,356	2,480	5,836	61.8	10.4	-4.2
Lancaster	266,382	416	3,034	2,098	5,133	51.9	12.3	-15.2
Laurens	317,916	497	4,133	3,818	7,951	40.0	16.0	1.7
Lee	220,106	344	1,783	1,638	3,421	64.3	9.9	4.5
Lexington	280,742	439	1,297	871	2,168	129.5	4.9	-24.6
McCormick	212,021	331	1,936	1,826	3,761	56.4	11.4	-6.4
Marion	216,907	339	1,842	1,768	3,611	60.1	10.7	16.8
Marlboro	281,271	439	1,661	675	2,336	120.4	5.3	-23.6
Newberry	317,761	497	3,823	3,751	7,574	42.0	15.3	-4.5
Oconee	284,348	444	853	267	1,120	254.0	2.5	-19.7
Orangeburg	504,516	788	6,177	5,110	11,287	44.7	14.3	1.1
Pickens	219,926	344	929	685	1,614	136.2	4.7	14.4
Richland	340,121	531	2,296	1,911	4,207	80.8	7.9	-21.7
Saluda	192,173	300	1,591	1,623	3,214	59.8	10.7	-18.9
Spartanburg	265,939	416	3,226	3,472	6,697	39.7	16.1	-5.3
Sumter	338,968	530	2,566	2,537	5,103	66.4	9.6	26.6
Union	258,111	403	3,976	3,895	7,871	32.8	19.5	8.0
Williamsburg	513,851	803	5,249	5,369	10,618	48.4	13.2	4.3
York	276,650	432	3,278	2,819	6,097	45.4	14.1	2.8
Total	14,028,896	21,920	131,346	117,432	248,778	67.0	11.6	3.9

95% Confidence Interval for harvest (+ -) **4,464** (+ -) **4,508** (+ -) **7,495**

* Acreage shown represents the acreage of forested land and acreage of row crops considered to be significant deer habitat within each county.

Table 2. County rankings based on deer harvested per unit area in South Carolina in 2008.

County	Acres	Square Miles	Buck Harvest	Doe Harvest	Total Harvest	Harvest Rates		% Change from 2007
						Ac/Deer	Deer/Mi. ²	
Bamberg	196,573	307	3,098	3,046	6,144	32.0	20.0	-4.6
Union	258,111	403	3,976	3,895	7,871	32.8	19.5	8.0
Allendale	216,455	338	3,052	3,256	6,308	34.3	18.7	16.3
Hampton	324,840	508	5,180	4,065	9,245	35.1	18.2	28.7
Abbeville	223,113	349	3,002	2,639	5,641	39.6	16.2	19.5
Spartanburg	265,939	416	3,226	3,472	6,697	39.7	16.1	-5.3
Laurens	317,916	497	4,133	3,818	7,951	40.0	16.0	1.7
Clarendon	298,087	466	3,845	3,341	7,186	41.5	15.4	26.5
Newberry	317,761	497	3,823	3,751	7,574	42.0	15.3	-4.5
Anderson	219,068	342	2,641	2,364	5,005	43.8	14.6	15.2
Greenwood	204,400	319	2,225	2,403	4,628	44.2	14.5	1.0
Colleton	502,666	785	5,847	5,500	11,347	44.3	14.4	20.1
Orangeburg	504,516	788	6,177	5,110	11,287	44.7	14.3	1.1
Charleston	288,732	451	3,177	3,205	6,382	45.2	14.1	20.1
Cherokee	156,664	245	1,737	1,720	3,457	45.3	14.1	-2.5
York	276,650	432	3,278	2,819	6,097	45.4	14.1	2.8
Barnwell	281,764	440	3,005	3,153	6,158	45.8	14.0	6.6
Chester	300,589	470	2,932	3,345	6,278	47.9	13.4	2.1
Williamsburg	513,851	803	5,249	5,369	10,618	48.4	13.2	4.3
Calhoun	190,584	298	1,814	1,973	3,787	50.3	12.7	-17.3
Jasper	309,889	484	2,835	3,253	6,088	50.9	12.6	10.2
Lancaster	266,382	416	3,034	2,098	5,133	51.9	12.3	-15.2
Fairfield	384,607	601	3,459	3,852	7,311	52.6	12.2	-19.1
Dorchester	302,717	473	3,014	2,542	5,557	54.5	11.7	13.7
McCormick	212,021	331	1,936	1,826	3,761	56.4	11.4	-6.4
Florence	397,888	622	3,578	3,146	6,724	59.2	10.8	12.9
Edgefield	246,543	385	2,183	1,970	4,154	59.4	10.8	-6.0
Saluda	192,173	300	1,591	1,623	3,214	59.8	10.7	-18.9
Marion	216,907	339	1,842	1,768	3,611	60.1	10.7	16.8
Kershaw	360,485	563	3,356	2,480	5,836	61.8	10.4	-4.2
Lee	220,106	344	1,783	1,638	3,421	64.3	9.9	4.5
Sumter	338,968	530	2,566	2,537	5,103	66.4	9.6	26.6
Beaufort	147,441	230	978	1,114	2,092	70.5	9.1	21.8
Berkeley	567,530	887	4,595	2,828	7,422	76.5	8.4	19.1
Georgetown	399,638	624	2,737	2,465	5,202	76.8	8.3	24.5
Richland	340,121	531	2,296	1,911	4,207	80.8	7.9	-21.7
Chesterfield	372,478	582	2,712	1,806	4,517	82.5	7.8	5.2
Aiken	500,546	782	3,456	2,345	5,801	86.3	7.4	16.9
Greenville	294,257	460	1,801	1,297	3,098	95.0	6.7	-17.9
Horry	533,336	833	2,947	2,334	5,281	101.0	6.3	5.0
Darlington	286,228	447	1,327	1,200	2,527	113.3	5.6	12.2
Marlboro	281,271	439	1,661	675	2,336	120.4	5.3	-23.6
Dillon	214,069	334	1,102	657	1,759	121.7	5.3	2.6
Lexington	280,742	439	1,297	871	2,168	129.5	4.9	-24.6
Pickens	219,926	344	929	685	1,614	136.2	4.7	14.4
Oconee	284,348	444	853	267	1,120	254.0	2.5	-19.7
Total	14,028,896	21,920	131,287	117,432	248,719	67.0	11.6	3.9

Table 3. County rankings based on total deer harvested in South Carolina in 2008.

County	Acres	Square Miles	Buck Harvest	Doe Harvest	Total Harvest	Harvest Rates		% Change from 2007
						Ac/Deer	Deer/Mi. ²	
Colleton	502,666	785	5,847	5,500	11,347	44.3	14.4	20.1
Orangeburg	504,516	788	6,177	5,110	11,287	44.7	14.3	1.1
Williamsburg	513,851	803	5,249	5,369	10,618	48.4	13.2	4.3
Hampton	324,840	508	5,180	4,065	9,245	35.1	18.2	28.7
Laurens	317,916	497	4,133	3,818	7,951	40.0	16.0	1.7
Union	258,111	403	3,976	3,895	7,871	32.8	19.5	8.0
Newberry	317,761	497	3,823	3,751	7,574	42.0	15.3	-4.5
Berkeley	567,530	887	4,595	2,828	7,422	76.5	8.4	19.1
Fairfield	384,607	601	3,459	3,852	7,311	52.6	12.2	-19.1
Clarendon	298,087	466	3,845	3,341	7,186	41.5	15.4	26.5
Florence	397,888	622	3,578	3,146	6,724	59.2	10.8	12.9
Spartanburg	265,939	416	3,226	3,472	6,697	39.7	16.1	-5.3
Charleston	288,732	451	3,177	3,205	6,382	45.2	14.1	20.1
Allendale	216,455	338	3,052	3,256	6,308	34.3	18.7	16.3
Chester	300,589	470	2,932	3,345	6,278	47.9	13.4	2.1
Barnwell	281,764	440	3,005	3,153	6,158	45.8	14.0	6.6
Bamberg	196,573	307	3,098	3,046	6,144	32.0	20.0	-4.6
York	276,650	432	3,278	2,819	6,097	45.4	14.1	2.8
Jasper	309,889	484	2,835	3,253	6,088	50.9	12.6	10.2
Kershaw	360,485	563	3,356	2,480	5,836	61.8	10.4	-4.2
Aiken	500,546	782	3,456	2,345	5,801	86.3	7.4	16.9
Abbeville	223,113	349	3,002	2,639	5,641	39.6	16.2	19.5
Dorchester	302,717	473	3,014	2,542	5,557	54.5	11.7	13.7
Horry	533,336	833	2,947	2,334	5,281	101.0	6.3	5.0
Georgetown	399,638	624	2,737	2,465	5,202	76.8	8.3	24.5
Lancaster	266,382	416	3,034	2,098	5,133	51.9	12.3	-15.2
Sumter	338,968	530	2,566	2,537	5,103	66.4	9.6	26.6
Anderson	219,068	342	2,641	2,364	5,005	43.8	14.6	15.2
Greenwood	204,400	319	2,225	2,403	4,628	44.2	14.5	1.0
Chesterfield	372,478	582	2,712	1,806	4,517	82.5	7.8	5.2
Richland	340,121	531	2,296	1,911	4,207	80.8	7.9	-21.7
Edgefield	246,543	385	2,183	1,970	4,154	59.4	10.8	-6.0
Calhoun	190,584	298	1,814	1,973	3,787	50.3	12.7	-17.3
McCormick	212,021	331	1,936	1,826	3,761	56.4	11.4	-6.4
Marion	216,907	339	1,842	1,768	3,611	60.1	10.7	16.8
Cherokee	156,664	245	1,737	1,720	3,457	45.3	14.1	-2.5
Lee	220,106	344	1,783	1,638	3,421	64.3	9.9	4.5
Saluda	192,173	300	1,591	1,623	3,214	59.8	10.7	-18.9
Greenville	294,257	460	1,801	1,297	3,098	95.0	6.7	-17.9
Darlington	286,228	447	1,327	1,200	2,527	113.3	5.6	12.2
Marlboro	281,271	439	1,661	675	2,336	120.4	5.3	-23.6
Lexington	280,742	439	1,297	871	2,168	129.5	4.9	-24.6
Beaufort	147,441	230	978	1,114	2,092	70.5	9.1	21.8
Dillon	214,069	334	1,102	657	1,759	121.7	5.3	2.6
Pickens	219,926	344	929	685	1,614	136.2	4.7	14.4
Oconee	284,348	444	853	267	1,120	254.0	2.5	-19.7
Total	14,028,896	21,920	131,287	117,432	248,719	67.0	11.6	3.9

Table 4. Estimated deer harvest on Wildlife Management Areas in South Carolina in 2008.

Area	Acreage	Bucks	Does	Total	Deer/Mi. ²
Mountain Hunt Unit	193,566	741	417	1,158	3.8
Central Piedmont Hunt Unit	159,793	2,078	2,057	4,135	16.6
Western Piedmont Hunt Unit	119,077	1,198	1,114	2,313	12.4
Subtotal for Upstate WMA's	472,436	4,017	3,589	7,606	10.3
Coastal WMA's*					
Bear Island WMA	1,519	13	24	37	15.6
Bonneau Ferry	10,697	48	63	111	6.6
Botany Bay WMA	2,000	32	47	79	25.3
Crackerneck WMA	10,470	80	36	116	7.1
Cross Generating Station WMA	654	12	10	22	21.5
Donnelley WMA	8,048	23	53	76	6.0
Francis Marion WMA	252,578	320	269	589	1.5
Hamilton Ridge	13,281	52	61	113	5.4
Hickory Top WMA	1,836	9	5	14	4.9
Manchester State Forest WMA	25,505	54	31	85	2.1
Moultrie WMA	9,480	35	19	54	3.6
Oak Lea WMA	2,024	24	59	83	26.2
Palachuola WMA	5,947	39	47	86	9.3
Santee Coastal Reserve WMA	5,000	5	19	24	3.1
Santee Cooper WMA	2,828	18	34	52	11.8
Victoria Bluff WMA	800	13	15	28	22.4
Webb Wildlife Center WMA	5,866	73	86	159	17.3
Subtotal for Coastal WMA's	358,533	850	878	1,728	3.1
Total	830,969	4,867	4,467	9,334	7.2

*Check Station data

Table 5. Hunter opinion (percent) regarding the number of deer in the area hunted most often in South Carolina in 2008 compared to previous years.

	Increasing	About the Same	Decreasing
Residents	19.1	52.0	28.9
Non-Residents	15.4	54.2	30.4
Overall	18.6	52.3	29.1

Table 6. The type of hunter (still, dog, or both) that hunters in South Carolina consider themselves to be by county.

County	Percent Based on County of Residence				Percent Based on County Hunted Most Often			
	Still	Dog	Both	Total	Still	Dog	Both	Total
Abbeville	100.0	0.0	0.0	100.0	99.4	0.0	0.6	100.0
Aiken	84.0	2.3	13.7	100.0	80.6	2.0	17.4	100.0
Allendale	91.7	0.0	8.3	100.0	88.7	1.6	9.7	100.0
Anderson	96.5	0.0	3.5	100.0	96.5	0.0	3.5	100.0
Bamberg	82.1	0.0	17.9	100.0	85.1	5.9	9.0	100.0
Barnwell	83.3	3.3	13.4	100.0	90.7	1.8	7.5	100.0
Beaufort	84.0	2.7	13.3	100.0	80.5	2.4	17.1	100.0
Berkeley	64.8	7.4	27.8	100.0	64.8	9.5	25.7	100.0
Calhoun	74.4	6.9	18.7	100.0	74.0	2.7	23.3	100.0
Charleston	77.0	6.6	16.4	100.0	73.6	5.5	20.9	100.0
Cherokee	98.2	0.0	1.8	100.0	96.5	0.0	3.5	100.0
Chester	95.0	0.0	5.0	100.0	98.8	0.0	1.2	100.0
Chesterfield	78.6	4.8	16.6	100.0	80.3	4.1	15.6	100.0
Clarendon	59.3	8.5	32.2	100.0	66.3	4.1	29.6	100.0
Colleton	52.8	14.3	32.9	100.0	61.4	15.3	23.3	100.0
Darlington	72.2	5.5	22.3	100.0	69.8	3.2	27.0	100.0
Dillon	71.0	9.8	19.2	100.0	76.7	4.6	18.7	100.0
Dorchester	63.0	10.3	26.7	100.0	61.3	10.9	27.8	100.0
Edgefield	96.1	0.0	3.9	100.0	91.9	0.0	8.1	100.0
Fairfield	91.4	2.9	5.7	100.0	94.5	0.0	5.5	100.0
Florence	72.2	7.9	19.9	100.0	73.5	9.1	17.4	100.0
Georgetown	78.0	7.0	15.0	100.0	77.3	8.4	14.3	100.0
Greenville	95.4	0.0	4.6	100.0	93.9	0.0	6.1	100.0
Greenwood	100.0	0.0	0.0	100.0	99.2	0.0	0.8	100.0
Hampton	69.8	5.7	24.5	100.0	74.7	2.6	22.7	100.0
Horry	83.6	5.8	10.6	100.0	82.5	5.0	12.5	100.0
Jasper	75.6	2.4	22.0	100.0	74.3	4.7	21.0	100.0
Kershaw	86.6	0.0	13.4	100.0	90.7	0.7	8.6	100.0
Lancaster	85.7	1.2	13.1	100.0	90.0	0.8	9.2	100.0
Laurens	97.9	0.0	2.1	100.0	96.9	0.0	3.1	100.0
Lee	70.4	3.7	25.9	100.0	80.0	6.2	13.8	100.0
Lexington	81.6	4.1	14.3	100.0	83.8	0.8	15.4	100.0
McCormick	96.4	0.0	3.6	100.0	95.7	0.0	4.3	100.0
Marion	70.3	13.5	16.2	100.0	76.4	10.9	12.7	100.0
Marlboro	71.4	3.6	25.0	100.0	67.3	14.5	18.2	100.0
Newberry	4.3	2.9	92.8	100.0	97.0	0.0	3.0	100.0
Oconee	92.2	1.1	6.7	100.0	93.4	0.0	6.6	100.0
Orangeburg	67.7	9.4	22.9	100.0	76.9	7.8	15.3	100.0
Pickens	97.6	0.8	1.6	100.0	97.1	1.5	1.4	100.0
Richland	89.9	2.6	7.5	100.0	83.9	2.3	13.8	100.0
Saluda	90.7	2.3	7.0	100.0	91.7	0.0	8.3	100.0
Spartanburg	95.0	0.0	5.0	100.0	96.0	0.0	4.0	100.0
Sumter	72.1	4.1	23.8	100.0	80.4	1.8	17.8	100.0
Union	98.2	0.0	1.8	100.0	98.0	0.0	2.0	100.0
Williamsburg	61.8	12.7	25.5	100.0	70.2	5.9	23.9	100.0
York	94.3	0.9	4.8	100.0	94.8	0.0	5.2	100.0
Total	83.7	3.6	12.7	100.0	85.1	3.3	11.6	100.0

Table 7. Resident deer hunter and deer harvest statistics in South Carolina in 2008.

County	Number Hunters	Man/Days Hunted	Percent Success	Deer/Hunter	Days/Deer	Buck Harvest	Doe Harvest	Total Harvest
Abbeville	4,052	61,311	68.9	1.29	11.73	2,719	2,506	5,225
Aiken	3,110	50,943	74.8	1.68	9.76	3,010	2,211	5,221
Allendale	1,990	29,855	78.6	2.07	7.24	1,937	2,186	4,123
Anderson	3,732	53,936	70.0	1.33	10.84	2,626	2,350	4,976
Bamberg	2,221	31,412	82.5	2.05	6.90	2,266	2,288	4,554
Barnwell	2,132	41,406	81.7	2.48	7.82	2,559	2,737	5,296
Beaufort	1,262	14,466	74.6	1.63	7.02	977	1,084	2,061
Berkeley	3,821	67,199	75.0	1.90	9.28	4,505	2,738	7,244
Calhoun	2,044	35,435	80.9	1.81	9.59	1,813	1,884	3,696
Charleston	2,843	48,379	75.2	2.12	8.03	2,998	3,026	6,025
Cherokee	1,404	26,799	74.7	1.85	10.33	1,351	1,244	2,595
Chester	3,128	46,133	68.2	1.38	10.73	2,115	2,186	4,301
Chesterfield	2,381	49,457	70.1	1.49	13.99	2,221	1,315	3,536
Clarendon	2,595	51,820	84.2	2.68	7.46	3,696	3,252	6,948
Colleton	4,674	84,019	76.4	2.09	8.61	4,940	4,816	9,756
Darlington	1,777	33,249	74.0	1.38	13.56	1,297	1,155	2,452
Dillon	1,031	19,085	84.4	1.71	10.85	1,102	657	1,759
Dorchester	2,399	52,426	77.9	2.25	9.69	2,955	2,453	5,408
Edgefield	2,701	40,161	70.4	1.39	10.66	1,990	1,777	3,767
Fairfield	4,727	64,543	73.3	1.32	10.32	2,879	3,377	6,255
Florence	3,288	56,458	80.0	2.00	8.59	3,519	3,056	6,575
Georgetown	2,506	47,873	73.0	1.96	9.76	2,559	2,346	4,905
Greenville	3,074	37,691	67.6	0.99	12.40	1,742	1,297	3,039
Greenwood	2,897	45,332	71.2	1.48	10.54	2,062	2,239	4,301
Hampton	2,044	26,804	78.8	2.12	6.18	2,044	2,296	4,339
Horry	2,648	48,868	69.1	1.97	9.39	2,932	2,275	5,207
Jasper	1,742	28,077	73.5	2.43	6.64	1,973	2,257	4,229
Kershaw	3,465	58,695	73.8	1.56	10.83	3,163	2,257	5,420
Lancaster	2,168	37,301	75.4	2.02	8.50	2,648	1,742	4,389
Laurens	4,443	72,185	74.4	1.68	9.69	3,821	3,625	7,446
Lee	2,044	37,924	75.6	1.61	11.54	1,724	1,564	3,288
Lexington	2,328	32,396	67.9	0.93	14.94	1,297	871	2,168
McCormick	2,328	33,872	67.1	1.33	10.95	1,564	1,528	3,092
Marion	1,724	28,380	77.3	2.05	8.03	1,813	1,724	3,536
Marlboro	1,511	23,378	73.8	1.37	11.30	1,557	511	2,068
Newberry	4,709	67,314	72.1	1.44	9.94	3,377	3,394	6,771
Oconee	1,617	21,823	56.0	0.69	19.49	853	267	1,120
Orangeburg	5,331	93,856	80.6	2.00	8.80	5,864	4,798	10,662
Pickens	1,706	18,751	65.2	0.94	11.72	914	685	1,599
Richland	3,590	50,345	67.8	1.09	12.88	2,133	1,777	3,910
Saluda	2,221	28,948	81.6	1.36	9.58	1,457	1,564	3,021
Spartanburg	4,087	55,852	71.7	1.59	8.59	3,092	3,412	6,504
Sumter	3,003	55,338	76.3	1.63	11.30	2,433	2,463	4,895
Union	3,963	56,812	74.4	1.50	9.54	2,861	3,092	5,953
Williamsburg	4,176	79,150	88.9	2.45	7.74	5,011	5,220	10,231
York	3,341	56,972	63.8	1.47	11.57	2,683	2,239	4,922
Total	129,975	2,102,429	71.7	1.73	9.61	115,050	103,740	218,790
% Change from 2007	1.8	7.0	0.0	5.3	-1.9	6.6	3.7	5.2

Table 8. Non-resident hunter and deer harvest statistics in South Carolina in 2008.

County	Number Hunters	Man/Days Hunted	Percent Success	Deer/Hunter	Days/Deer	Buck Harvest	Doe Harvest	Total Harvest
Abbeville	238	2,646	62.5	1.75	6.36	282	134	416
Aiken	297	3,330	85.0	1.95	5.74	446	134	580
Allendale	1,160	11,001	79.5	1.88	5.03	1,115	1,070	2,185
Anderson	30	178	100.0	1.00	6.00	15	15	30
Bamberg	803	11,165	83.3	1.98	7.02	833	758	1,591
Barnwell	446	5,560	76.7	1.93	6.45	446	416	862
Beaufort	59	788	75.0	1.50	8.83	59	30	89
Berkeley	164	1,130	81.8	1.09	6.33	89	89	178
Calhoun	89	1,189	83.3	1.67	13.08	2	89	91
Charleston	193	1,858	92.3	1.85	5.21	178	178	357
Cherokee	342	5,515	78.3	2.52	6.40	387	476	862
Chester	1,174	15,581	67.1	1.68	7.88	818	1,160	1,977
Chesterfield	535	7,642	77.8	1.83	7.79	491	491	981
Clarendon	149	1,130	80.0	1.60	4.75	149	89	238
Colleton	624	12,800	83.3	2.55	8.05	907	684	1,591
Darlington	59	1,115	100.0	1.25	15.00	30	45	74
Dillon	15	149	0.0	0.00	0.00	0	0	0
Dorchester	45	580	66.7	3.33	3.90	59	89	149
Edgefield	178	2,245	75.0	2.17	5.81	193	193	387
Fairfield	684	9,188	69.6	1.54	8.70	580	476	1,056
Florence	74	684	80.0	2.00	4.60	59	89	149
Georgetown	134	2,275	44.4	2.22	7.65	178	119	297
Greenville	89	922	33.3	0.67	15.50	59	0	59
Greenwood	149	2,319	70.0	2.20	7.09	164	164	327
Hampton	2,037	30,731	80.3	2.41	6.26	3,137	1,769	4,906
Horry	89	1,442	50.0	0.83	19.40	15	59	74
Jasper	728	11,299	93.9	2.55	6.08	862	996	1,858
Kershaw	431	5,857	65.5	0.97	14.07	193	223	416
Lancaster	550	7,984	62.2	1.35	10.74	387	357	743
Laurens	342	4,519	78.3	1.48	8.94	312	193	505
Lee	149	1,026	60.0	0.90	7.67	59	74	134
Lexington	59	357	0.0	0.00	0.00	0	0	0
McCormick	401	6,616	70.4	1.67	9.89	372	297	669
Marion	74	372	100.0	1.00	5.00	30	45	74
Marlboro	193	2,750	61.5	1.38	10.28	104	164	268
Newberry	535	4,460	8-.5	1.50	5.56	446	357	803
Oconee	30	119	50.0	0.50	0.00	0	0	0
Orangeburg	505	3,955	76.5	1.24	6.33	312	312	624
Pickens	45	253	66.7	0.33	17.00	15	0	15
Richland	164	1,977	72.7	1.82	6.65	164	134	297
Saluda	149	1,903	80.0	1.30	9.85	134	59	193
Spartanburg	164	2,379	83.3	1.18	12.31	134	59	193
Sumter	149	1,085	70.0	1.40	5.21	134	74	208
Union	1,115	15,402	68.0	1.72	8.03	1,115	803	1,918
Williamsburg	208	2,616	78.6	1.86	6.77	238	149	387
York	565	8,504	81.6	2.08	7.24	595	580	1,174
TOTAL	16,413	216,595	73.1	1.83	7.22	16,296	13,692	29,988
% Change from 2007	-6.50	-7.9	2.5	0.0	16.1	-9.6	-9.3	-9.4

Table 9. Hunting effort (man/days) by county for successful and unsuccessful resident and non-resident deer hunters in South Carolina in 2008.

County	Residents (man/days)			Total Effort Residents	Non-Residents (man/days)			Total Effort Non-residents	Total Days
	Successful	Unsuccessful	Average		Successful	Unsuccessful	Average		
Abbeville	20.5	8.1	15.1	61,311	14.1	7.3	11.1	2,646	64,243
Aiken	24.0	6.7	16.4	50,943	13.6	1.8	11.2	3,330	54,617
Allendale	18.6	9.2	15.0	29,855	11.2	4.9	9.5	11,001	42,119
Anderson	18.5	9.5	14.5	53,936	6.0	0.0	6.0	178	54,159
Bamberg	18.3	7.0	14.1	31,412	16.7	3.1	13.9	11,165	43,467
Barnwell	25.0	8.3	19.4	41,406	15.7	6.8	12.5	5,560	47,478
Beaufort	15.9	3.8	11.5	14,466	16.3	4.0	13.3	788	15,351
Berkeley	22.1	10.5	17.6	67,199	9.5	5.4	6.9	1,130	68,525
Calhoun	22.9	7.7	17.3	35,435	14.0	10.0	13.3	1,189	36,756
Charleston	24.1	7.1	17.0	48,379	10.6	4.0	9.6	1,858	50,468
Cherokee	23.4	10.4	19.1	26,799	20.1	7.1	16.1	5,515	32,723
Chester	20.6	8.2	14.8	46,133	18.0	7.3	13.3	15,581	63,005
Chesterfield	28.7	10.7	20.8	49,457	18.7	2.9	14.3	7,642	57,705
Clarendon	25.7	8.4	20.0	51,820	7.5	7.8	7.6	1,130	53,132
Colleton	23.2	8.9	18.0	84,019	23.6	9.0	20.5	12,800	97,539
Darlington	29.0	7.6	18.7	33,249	23.0	14.5	18.8	1,115	34,484
Dillon	22.4	9.8	18.5	19,085	18.0	10.0	10.0	149	19,288
Dorchester	29.1	9.4	21.9	52,426	12.3	3.0	13.0	580	53,082
Edgefield	19.2	9.0	14.9	40,161	16.9	13.3	12.6	2,245	42,639
Fairfield	16.9	9.3	13.7	64,543	13.7	9.0	13.4	9,188	74,496
Florence	21.0	9.3	17.2	56,458	31.3	2.5	9.2	684	57,264
Georgetown	24.8	8.3	19.1	47,873	12.0	5.6	17.0	2,275	50,325
Greenville	18.4	7.1	12.3	37,691	20.3	9.5	10.3	922	38,748
Greenwood	21.3	8.0	15.7	45,332	17.7	4.7	15.6	2,319	47,848
Hampton	17.7	5.7	13.1	26,804	9.0	7.3	15.1	30,731	59,740
Horry	25.6	8.2	18.5	48,868	17.5	17.6	16.2	1,442	50,457
Jasper	22.0	6.0	16.1	28,077	18.4	3.7	15.5	11,299	40,191
Kershaw	24.1	7.3	16.9	58,695	17.3	7.7	13.6	5,857	65,051
Lancaster	21.2	9.8	17.2	37,301	16.6	9.9	14.5	7,984	45,913
Laurens	21.4	8.2	16.2	72,185	6.2	5.6	13.2	4,519	77,094
Lee	25.3	8.9	18.6	37,924	19.1	8.0	6.9	1,026	39,142
Lexington	24.0	6.6	13.9	32,396	6.3	6.0	6.0	357	32,835
McCormick	20.4	9.0	14.6	33,872	18.1	12.0	16.5	6,616	40,962
Marion	21.1	9.0	16.5	28,380	9.1	3.0	5.0	372	28,848
Marlboro	19.6	6.2	15.5	23,378	3.0	9.7	14.2	2,750	26,362
Newberry	17.9	9.7	14.3	67,314	9.7	6.3	8.3	4,460	72,369
Oconee	16.3	11.4	13.5	21,823	14.0	5.0	4.0	119	21,997
Orangeburg	23.3	6.8	17.6	93,856	15.4	4.0	7.8	3,955	98,377
Pickens	14.5	7.9	11.0	18,751	17.5	1.5	5.7	253	19,076
Richland	21.4	8.3	14.0	50,345	21.3	3.3	12.1	1,977	52,534
Saluda	18.3	5.8	13.0	28,948	10.0	5.8	12.8	1,903	31,039
Spartanburg	17.5	8.5	13.7	55,852	15.6	10.7	14.5	2,379	58,447
Sumter	25.3	7.7	18.4	55,338	15.5	3.3	7.3	1,085	56,608
Union	19.9	7.9	14.3	56,812	16.4	10.6	13.8	15,402	73,444
Williamsburg	23.0	7.0	19.0	79,150	12.5	1.7	12.6	2,616	82,015
York	22.7	10.3	17.1	56,972	16.1	12.1	15.1	8,504	66,122
Total	21.7	8.3	16.2	2,102,429	16.0	8.3	13.2	216,595	2,319,024
% Change from 2007	-0.1	-4.9	-3.1	6.4	-3.2	-14.5	-4.5	-7.30	5.1

Table 10. Estimated deer harvest by weapon type in South Carolina in 2008.

	Rifle	Bow & Arrow	Shotgun	Muzzle-loader	Crossbow	Handgun	Total
Number of Deer Harvested	192,057	17,663	29,605	7,712	746	995	248,778
Percent Total Deer Harvest	77.2	7.1	11.9	3.1	0.3	0.4	100.0
Percent Hunter Success With Weapon	68.2	31.5	35.0	29.3	25.0	16.4	NA*

* Total is not applicable because individual hunters take deer with multiple weapons.

Table 11. Number of hunters using each type of weapon in South Carolina in 2008.

	Rifle	Bow & Arrow	Shotgun	Muzzle-loader	Crossbow	Handgun
Residents	119,967	33,794	43,802	21,056	3,509	6,499
Non-Residents	15,691	3,069	1,953	3,956	427	525
Total	135,658	36,863	45,755	25,011	3,936	7,024

Total across weapons not given because hunters use multiple weapons. Total hunters = 146,388.

Table 12. Weapons utilization (percent) among deer hunters in South Carolina in 2008.

	Rifle	Bow & Arrow	Shotgun	Muzzle-loader	Crossbow	Handgun
Residents	92.3*	26.0*	33.7*	16.2*	2.7	5
Non-Residents	95.6	18.7	11.9	24.1	2.6	3.2
Total	92.8	24.9	30.3	17.4	2.7	4.7

* Significant difference in weapons use category based on residency.

Table 13. Weapons preference (percent) among deer hunters in South Carolina in 2008.

	Rifle	Bow & Arrow	Shotgun	Muzzle-loader	Crossbow	Handgun	Total
Residents	75.5*	12.8*	9.4*	1.5*	0.5	0.4	100.0
Non-Residents	83.7	8.7	2.3	4.5	0.4	0.4	100.0
Total	76.7	12.2	8.2	2.0	0.5	0.4	100.0

* Significant difference in weapons preference category based on residency.

Table 14. Estimated wild hog and coyote harvest by deer hunters in South Carolina in 2008.

County	Hog Harv.	Harv./ Mile ²	% Change from 2007	2008 Rank	2007 Rank	Coyote Harv.	Harv./ Mile ²	% Change from 2007	2008 Rank	2007 Rank
Abbeville	1,942	5.57	192.4	3	11	835	2.39	82.6	6	18
Aiken	1,428	1.83	60.1	17	19	1,032	1.32	8.8	16	23
Allendale	2,460	7.27	70.7	1	1	395	1.17	-4.0	21	21
Anderson	1,010	2.95	100.9	11	16	747	2.18	30.6	7	6
Bamberg	901	2.93	87.6	12	15	571	1.86	78.5	9	31
Barnwell	615	1.40	34.6	21	23	527	1.20	0.2	20	24
Beaufort	220	0.95	*	26	43	351	1.53	409.3	12	43
Berkeley	988	1.11	-12.1	24	18	351	0.40	-33.2	44	38
Calhoun	395	1.33	-56.8	22	5	439	1.48	12.9	14	18
Charleston	1,911	4.24	70.5	6	8	593	1.31	270.6	18	41
Cherokee	57	0.23	148.3	36	40	901	3.68	146.0	1	12
Chester	66	0.14	-58.8	38	36	571	1.22	-40.9	19	3
Chesterfield	439	0.75	-28.8	31	22	329	0.57	-53.5	39	21
Clarendon	703	1.51	-40.9	19	7	615	1.32	-8.9	16	14
Colleton	2,262	2.88	64.9	13	13	198	0.25	-60.7	46	36
Darlington	1,450	3.24	-1.0	9	3	286	0.64	-30.7	38	33
Dillon	742	2.22	441.9	14	33	290	0.87	1,160.5	33	46
Dorchester	1,757	3.71	14.1	7	4	549	1.16	14.4	22	32
Edgefield	0	0.00	*	43	43	922	2.39	44.1	5	7
Fairfield	461	0.77	-25.2	29	24	308	0.51	-65.9	42	11
Florence	571	0.92	-18.1	28	20	286	0.46	-16.8	43	39
Georgetown	1,975	3.16	72.8	10	12	659	1.06	105.9	29	40
Greenville	198	0.43	8.0	34	34	395	0.86	-30.9	34	20
Greenwood	154	0.48	122.8	33	37	329	1.03	-44.6	31	4
Hampton	2,460	4.85	99.2	4	9	395	0.78	8.0	37	35
Horry	1,845	2.21	100.5	15	21	286	0.34	24.7	45	44
Jasper	747	1.54	133.4	18	30	791	1.63	768.9	11	45
Kershaw	1,076	1.91	96.0	16	25	637	1.13	-3.2	24	25
Lancaster	22	0.05	-93.8	42	27	879	2.11	1.1	8	2
Laurens	66	0.13	-64.0	39	35	439	0.88	-38.0	32	17
Lee	66	0.19	-58.8	37	32	505	1.47	0.4	15	13
Lexington	264	0.60	282.0	32	38	813	1.85	18.5	10	10
McCormick	44	0.13	91.0	39	41	176	0.53	-66.6	41	9
Marion	2,315	6.83	159.5	2	6	351	1.04	70.6	30	37
Marlboro	527	1.20	-7.8	23	17	1,054	2.40	669.5	4	42
Newberry	0	0.00	*	43	43	571	1.15	-27.9	23	8
Oconee	461	1.04	12.8	25	26	1,120	2.52	122.7	3	26
Orangeburg	747	0.95	72.1	26	31	439	0.56	-61.6	40	14
Pickens	264	0.77	4.6	29	29	527	1.53	35.5	12	26
Richland	2,451	4.61	23.4	5	2	571	1.07	-25.3	27	16
Saluda	22	0.07	-90.8	41	28	1,010	3.36	57.9	2	1
Spartanburg	110	0.26	*	35	43	461	1.11	-38.9	25	5
Sumter	1,867	3.52	65.8	8	10	439	0.83	-26.2	36	28
Union	0	0.00	-100.0	43	42	439	1.09	1.2	26	30
Williamsburg	1,164	1.45	-13.7	20	14	681	0.85	14.4	35	34
York	0	0.00	-100.0	43	38	461	1.07	-3.9	27	29
Total	39,221	1.79	28.7	NA	NA	25,526	1.16	6.2	NA	NA
	(+ -) 3,512					(+ -) 1,516				

95% Confidence Interval for harvest

*No indication of hogs harvested in 2007

Table 16. Average live body weights of deer from South Carolina counties, based on historic data.

COUNTY	Males				Females			
	1.5 Years Old		2.5+ Years Old		1.5 Years Old		2.5+ Years Old	
	N	Avg. Wt.	N	Avg. Wt.	N	Avg. Wt.	N	Avg. Wt.
Abbeville	1,390	111.7	484	145.9	466	90.4	747	102.7
Aiken	2,667	121.6	1,485	162.6	808	94.9	1,522	109.6
Allendale	6,175	108.9	3,333	146.0	2,503	87.7	5,606	100.8
Anderson	30	121.9	17	148.1	4	92.5	8	113.0
Bamberg	2,414	111.9	1,113	142.4	884	91.4	1,721	103.9
Barnwell	1,478	119.1	695	156.6	601	94.3	1,071	106.9
Beaufort	952	101.6	1,236	135.2	690	86.7	1,818	99.8
Berkeley	3,162	100.6	4,198	127.3	1,086	83.4	3,991	97.2
Calhoun	1,588	110.2	633	144.1	312	91.4	943	104.6
Charleston	1,256	97.9	2,088	123.3	422	83.3	1,581	95.8
Cherokee	1	80.0	1	139.0	9	77.8	26	89.6
Chester	1,445	105.9	963	140.1	470	87.4	1,091	99.4
Chesterfield	79	119.4	140	152.5	27	93.5	1,128	99.8
Clarendon	13	101.3	29	152.5	42	89.6	87	103.0
Colleton	5,822	105.6	6,908	135.5	3,279	87.9	8,920	100.4
Darlington	334	113.6	273	153.3	216	92.8	573	105.2
Dillon	74	112.8	46	138.5	13	92.8	50	103.9
Dorchester	1,868	107.2	2,205	137.0	653	88.0	2,055	103.0
Edgefield	556	100.9	334	133.4	159	84.6	306	96.9
Fairfield	2,048	102.1	1,444	136.5	761	86.3	2,021	99.2
Florence	696	110.8	459	139.2	198	89.6	621	102.8
Georgetown	1,881	98.7	2,281	126.1	668	85.6	1,961	97.6
Greenville	7	122.1	9	149.9	7	79.3	16	98.4
Greenwood	1,158	111.4	537	145.1	313	90.2	629	103.0
Hampton	6,103	106.7	4,710	140.0	3,034	87.2	7,236	100.5
Horry	302	96.1	311	126.1	129	79.2	301	91.3
Jasper	3,385	101.8	4,691	135.4	2,142	84.6	5,948	96.9
Kershaw	603	108.9	588	144.6	251	89.6	758	102.9
Lancaster	472	113.1	246	153.3	213	91.4	441	105.2
Laurens	240	104.7	181	132.9	107	87.3	238	96.9
Lee	472	119.6	187	151.3	162	96.6	330	108.5
Lexington	20	120.8	9	164.8	6	101.3	15	115.8
McCormick	2,354	101.5	1,056	134.5	877	85.3	1,745	97.3
Marion	690	108.5	501	138.7	256	88.6	630	98.7
Marlboro	106	115.0	62	149.8	30	95.0	70	107.8
Newberry	143	97.1	100	135.6	85	86.0	171	92.7
Oconee	74	113.1	58	152.6	33	85.3	39	99.6
Orangeburg	2,293	112.5	1,375	145.0	686	90.8	1,684	103.4
Pickens	47	109.1	41	145.4	18	79.9	48	100.5
Richland	1,320	106.1	1,274	145.2	651	92.7	1,879	106.3
Saluda	100	115.8	40	148.0	25	93.6	34	105.2
Spartanburg	34	109.3	22	142.2	13	95.0	31	98.8
Sumter	666	111.3	353	142.1	188	94.4	509	105.3
Union	958	101.7	608	135.8	439	87.9	761	97.8
Williamsburg	469	112.5	559	143.3	150	91.4	478	106.0
York	13	96.9	30	143.9	20	78.7	41	93.9
Total	57,958	107.3	47,913	137.9	24,106	88.0	61,879	100.6

Table 17. Antler characteristics of male deer from South Carolina counties, based on historic data.

COUNTY	1.5 Years Old Males			2.5+ Years Old Males			% 1.5 Bucks in Antlered Harvest
	Number Points	Percent Spikes	Outside Spread	Number Points	Percent Spikes	Outside Spread	
Abbeville	4.2	32		7.2	2		74
Aiken	4.4	28	8.7	7.4	1	14.7	64
Allendale	4.0	36	7.7	7.2	3	13.7	65
Anderson	4.7	28		6.8	0		63
Bamberg	4.0	34	7.6	6.7	4	12.5	68
Barnwell	4.6	21	8.7	7.1	2	13.9	68
Beaufort	3.1	58	7.4	6.4	9	13.0	44
Berkeley	3.0	62	6.6	5.8	12	11.5	43
Calhoun	4.0	33	7.4	7.0	3	13.2	72
Charleston	2.8	69	6.2	5.4	15	10.6	38
Cherokee				7.0	0		50
Chester	3.4	47	8.7	6.7	4	13.9	61
Chesterfield	4.5	21	8.6	7.2			61
Clarendon	2.8	58	6.2	7.7	3	12.9	31
Colleton	3.3	50	6.9	6.4	7	11.7	46
Darlington	3.1	57	7.4	6.7	5	13.7	55
Dillon	3.2	54	8.1	5.7	9	11.6	62
Dorchester	3.3	53	6.6	6.0	9	11.1	46
Edgefield	3.3	50		6.6	5		63
Fairfield	3.1	55	7.5	6.4	6	13.8	59
Florence	3.4	47	7.4	6.1	9	12.1	60
Georgetown	2.8	65	6.6	5.6	13	11.0	45
Greenville	4.7	14		7.6	0		44
Greenwood	3.9	34		6.7	3		68
Hampton	3.9	39	7.7	6.9	4	13.0	56
Horry	3.0	58	6.8	6.2	8	12.1	49
Jasper	3.3	52	7.0	6.6	6	12.8	42
Kershaw	3.6	47	7.7	6.9	7	12.3	51
Lancaster	4.3	27	6.7	7.4	0	15.0	66
Laurens	3.2	53	6.7	6.0	10	13.7	57
Lee	4.3	25	8.4	6.7	2	12.9	72
Lexington	4.1	30	9.1	7.3	0	15.7	69
McCormick	3.5	47		6.8	4		69
Marion	3.3	52	7.3	6.2	10	12.4	58
Marlboro	3.1	53	7.0	6.4	10	12.6	63
Newberry	2.8	54		6.3	8	13.3	59
Oconee	3.4	52		7.3	3		56
Orangeburg	3.8	38	7.6	6.8	5	12.6	63
Pickens	4.0	43		7.2	2		53
Richland	3.3	52	7.3	6.8	5	13.5	51
Saluda	4.0	32	9.0	6.9	0	10.8	71
Spartanburg	4.0	33	6.1	7.1	0		61
Sumter	3.7	41	7.7	6.6	5	12.5	65
Union	3.3	51	7.2	6.6	5	13.6	61
Williamsburg	3.6	43	7.6	6.8	5	12.6	46
York	3.1	60	5.3	7.4	0	13.3	30
Total	3.6	44	7.4	6.5	7	12.4	55

Figure 1. South Carolina Department of Natural Resources 2008 Deer Hunter Survey

January, 2009

Dear Sportsman:

White-tailed deer are one of the most important game species in South Carolina. Therefore, it is important that this species be monitored for population status and harvesting activities. Wildlife resource managers require current and accurate information about deer harvests to aid in successfully managing this important natural resource and to optimize future hunting potential. To obtain this needed data, the Department of Natural Resources (DNR) is conducting a survey of licensed Big Game Permit holders.

You are one of a group of randomly selected hunters asked to participate in this survey. To draw accurate conclusions it is very important that you complete the survey and return it. Please take time to read each question. Even if you did not hunt deer last season please indicate this by answering the appropriate questions and moving on to the next set of questions.

In addition to the questions concerning your deer hunting activities, there are questions concerning the weapons that you used to harvest deer and questions concerning the number of wild hogs and coyotes that you may have harvested. Not only is this data important to DNR game biologists, many hunters are interested in this type of information so it is important that you answer these questions too.

Please note that complete confidentiality will be given to you. There is no number on your survey form, therefore, there is no way to link your responses to you. Keep in mind that the primary purpose of the survey is to determine the deer harvest in South Carolina and not to determine whether game laws are observed. By accurately answering the survey questions you will enable DNR biologists to better manage the white-tailed deer resource for you and other citizens of the state.

Please keep in mind that in order to reduce costs, this is the only 2008 Deer Hunter Survey form you will receive. There will be no reminders or second surveys sent to individuals that do not respond to this initial survey. Therefore, it is very important that you take a few minutes to complete this survey and mail it. Return postage is prepaid.

Results of this survey will be posted on the DNR web site once completed (hopefully by June). The results from the 2007 survey can be found at www.dnr.sc.gov/wildlife/deer/2007/DeerHarvestReport.html

Thank you for your assistance.



Charles Ruth
Wildlife Biologist
Deer/Turkey Project Supervisor

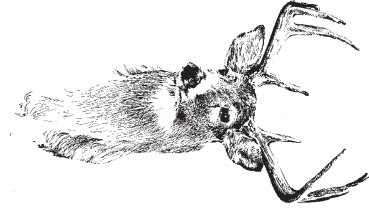
PLEASE MAIL YOUR SURVEY AFTER SEPARATING THIS HALF FROM THE SIDE ON WHICH YOUR ANSWERS HAVE BEEN ENTERED. NO POSTAGE IS NECESSARY.

If you have questions regarding this survey, please call 803-734-3886 or write 2008 Deer Hunter Survey, SCDNR, P.O. Box 167, Columbia, SC 29202.

The South Carolina Department of Natural Resources prohibits discrimination on the basis of race, color, gender, national origin, disability, religion or age. Direct all inquiries to the Office of Human Resources, P.O. Box 167, Columbia, SC 29202

08WL6374

Printed on Recycled Paper



**DEER HUNTER SURVEY
SC DEPARTMENT OF NATURAL RESOURCES
PO BOX 167
COLUMBIA SC 29202-9976**

BUSINESS REPLY MAIL
FIRST CLASS MAIL PERMIT NO 1371 COLUMBIA SC
POSTAGE WILL BE PAID BY ADDRESSEE



Figure 1 cont.

2008 South Carolina Deer Hunter Survey

1. Did you hunt deer in SC this past season (2008)? **1. Yes** **2. No**
If you answered **No** to this question please **go to question # 10.**
2. Did you harvest any deer in SC this past season? **1. Yes** **2. No**
3. Even if you did not harvest any deer, please record the SC counties you deer hunted and the number of days hunted in each county this past season (2008). Please begin with the county you hunted the most. If you harvested deer please record the number of bucks and does taken in each county. A day of hunting is defined as any portion of the day spent afield. Please do not give ranges (i.e. 5-10), rather provide absolute numbers (i.e. 5). Provide information only for yourself - not friends, relatives, or other hunt club members.

Counties You Deer Hunted	# Days Hunted	Number Deer Harvested	
1		# Bucks	#Does
2		# Bucks	#Does
3		# Bucks	#Does
4		# Bucks	#Does

4. Please record the number of deer taken with each weapon last season (2008).

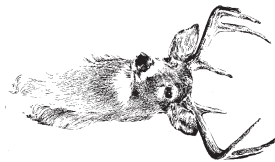
Rifle	Bow	Shotgun	Muzzleloader	Crossbow	Handgun

5. Please circle **all** the weapons that you hunted deer with in 2008.
1. Rifle 2. Bow 3. Shotgun 4. Muzzleloader 5. Crossbow 6. Handgun
6. Please circle the **one** weapon that you **prefer to hunt deer with.**
1. Rifle 2. Bow 3. Shotgun 4. Muzzleloader 5. Crossbow 6. Handgun
7. Compared to past years, how would you describe the number of deer in the area that you hunt most often? **Circle one**
1. Increasing 2. About the same 3. Decreasing
8. Did you purchase Individual Antlerless Deer Tags in 2008? **1. Yes** **2. No**
If you answered **No** to this question please **go to question # 10.**
9. How many tags did you purchase and how many tags did you use? _____
purchased # used
10. As it relates to deer hunting which **one** of the following would you consider yourself?
1. Still hunter **2. Dog hunter** **3. Both**
11. If you **harvested** any wild hogs or coyotes in SC in 2008, please complete the box below.
If you did not harvest any hogs or coyotes please **go to question # 12.**

County	# Hogs	County	# Coyotes
1		1	
2		2	
3		3	

12. Are you a resident of SC? **1. Yes** **2. No**
13. If yes, which county _____

Separate and return this portion of the survey. Postage is prepaid. Please do not staple this form.



**Help Manage
SC's Deer Herd
COMPLETE YOUR
HUNTER
SURVEY**



DEER HUNTER SURVEY
 SCDNR
 PO BOX 167
 COLUMBIA SC 29202-0167
 www.dnr.sc.gov

PRESORTED
 FIRST CLASS
 US POSTAGE
 PAID
 COLUMBIA SC
 PERMIT 535

Figure 2. Percent of female deer conceiving by week in South Carolina, based on historic data.

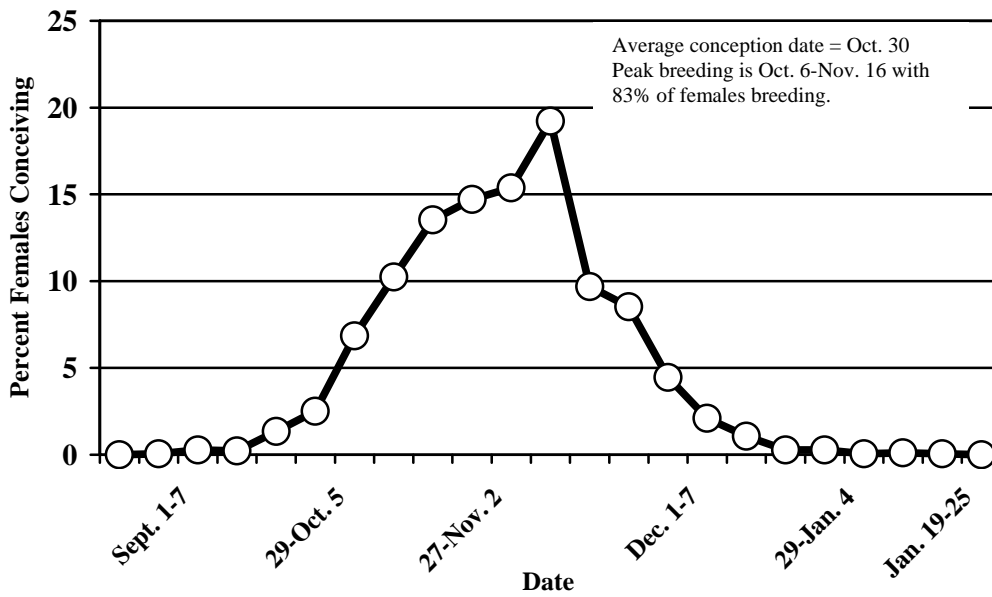


Figure 3. Percent of deer harvested by week of hunting season in South Carolina, based on historic data.

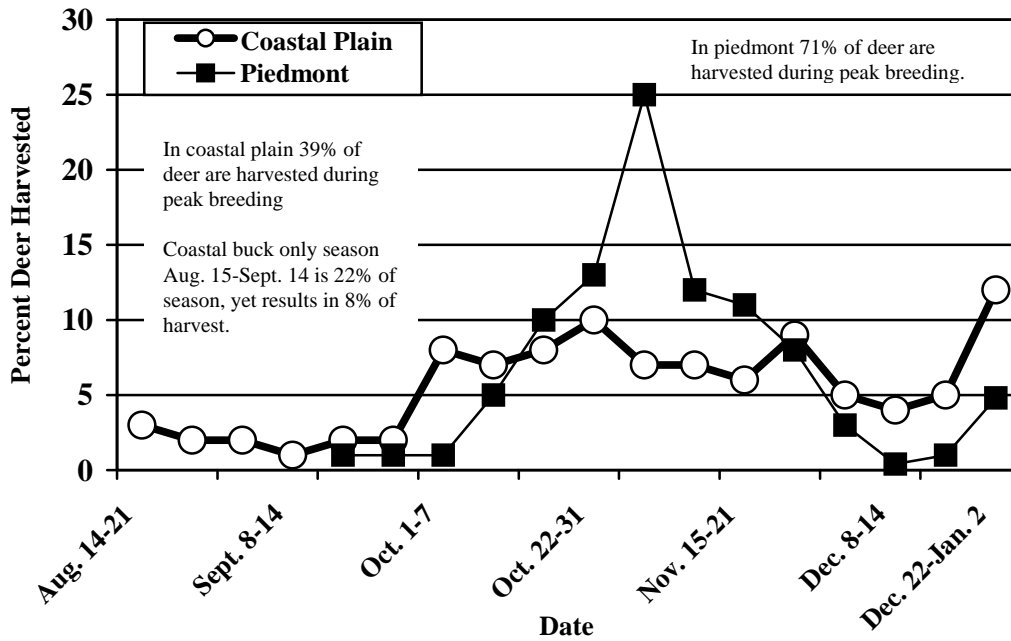


Figure 4. Estimated deer harvest in South Carolina 1972-2008.

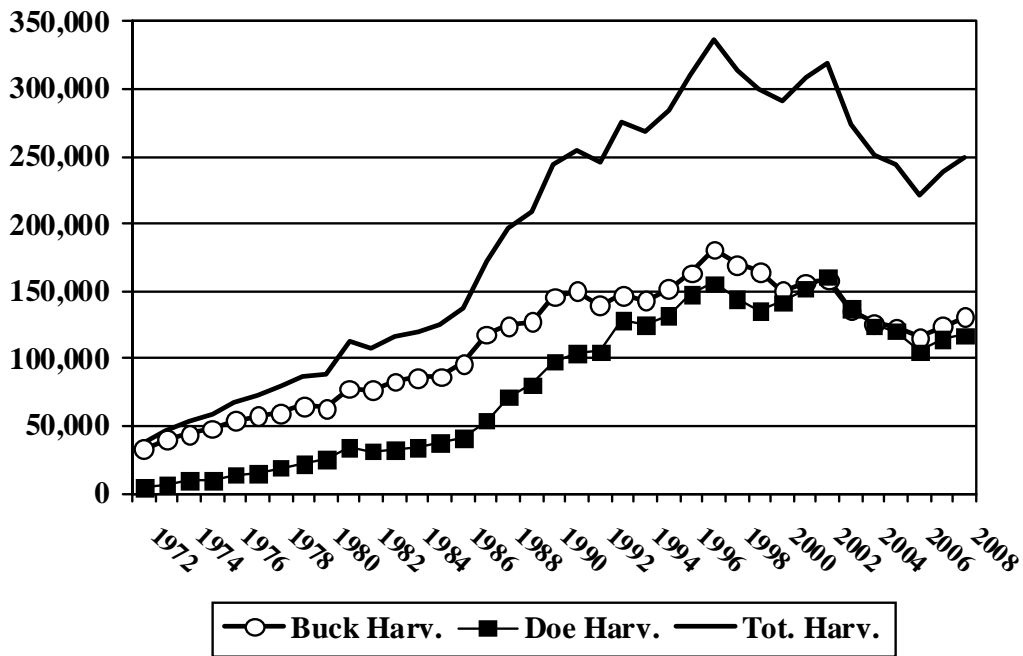


Figure 5. South Carolina deer population 1972-2008 based on population reconstruction modeling. Note that antlerless deer includes male fawns (button bucks).

