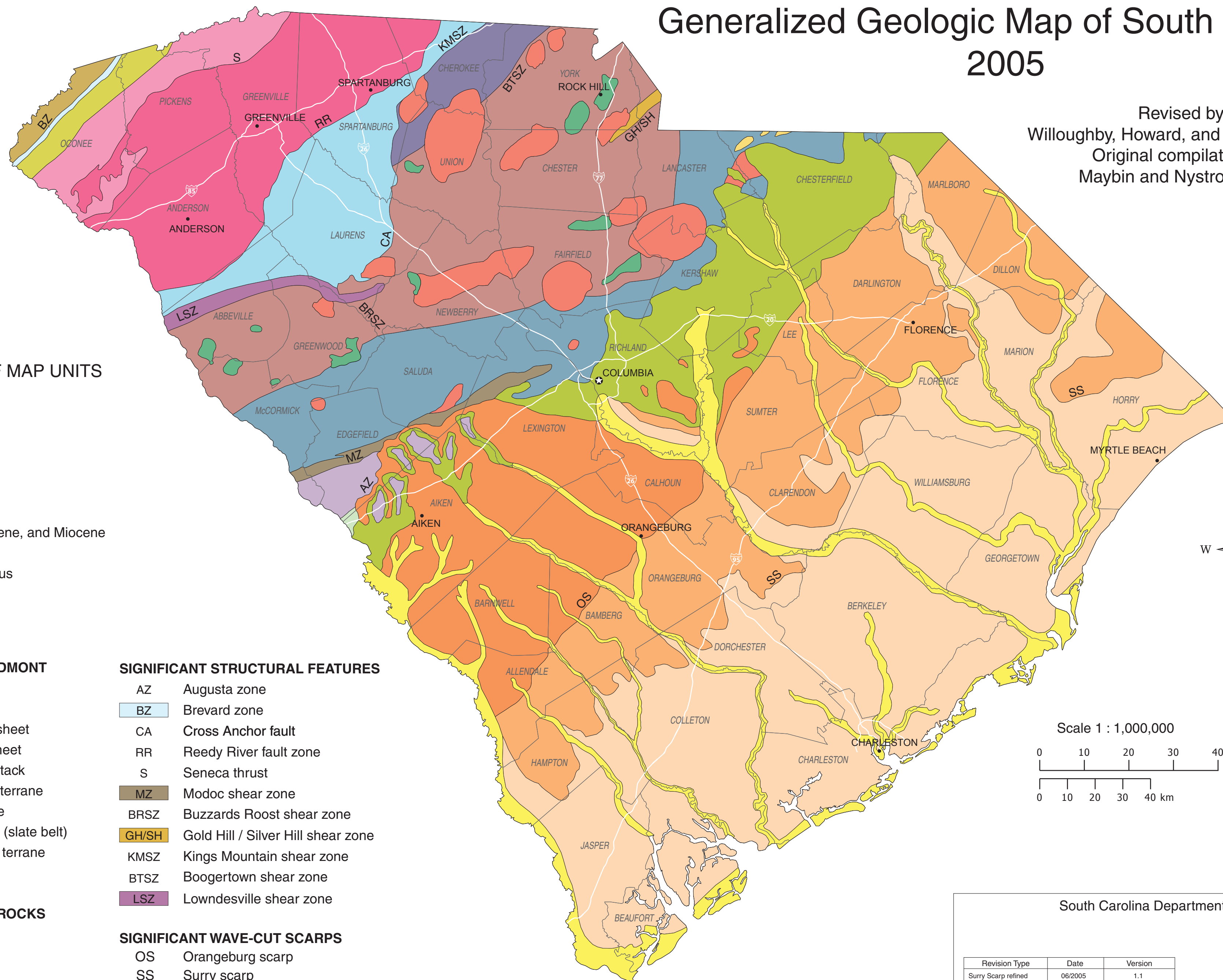


# Generalized Geologic Map of South Carolina 2005

Revised by  
Willoughby, Howard, and Nystrom, 2005  
Original compilation by  
Maybin and Nystrom, 1997



## DESCRIPTION OF MAP UNITS

### COASTAL PLAIN

#### QUATERNARY

- Holocene
- Pleistocene

#### TERTIARY

- Pliocene
- Paleocene, Eocene, and Miocene

#### CRETACEOUS

- Upper Cretaceous

### TRIASSIC

- Triassic basins

### BLUE RIDGE AND PIEDMONT

- Blue Ridge
- Chauga belt
- Walhalla thrust sheet
- Sixmile thrust sheet
- Laurens thrust stack
- Kings Mountain terrane
- Charlotte terrane
- Carolina terrane (slate belt)
- Savannah River terrane
- Augusta terrane

### INTRUSIVE IGNEOUS ROCKS

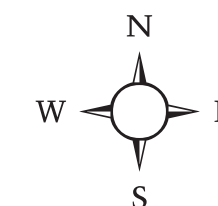
- Gabbro
- Granite

### SIGNIFICANT STRUCTURAL FEATURES

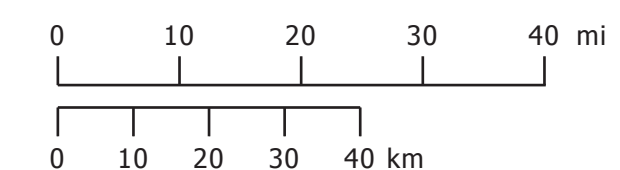
- AZ Augusta zone
- BZ Brevard zone
- CA Cross Anchor fault
- RR Reedy River fault zone
- S Seneca thrust
- MZ Modoc shear zone
- BRSZ Buzzards Roost shear zone
- GH/SH Gold Hill / Silver Hill shear zone
- KMSZ Kings Mountain shear zone
- BTSZ Boogertown shear zone
- LSZ Lowndesville shear zone

### SIGNIFICANT WAVE-CUT SCARPS

- OS Orangeburg scarp
- SS Surry scarp



Scale 1 : 1,000,000



South Carolina Department of Natural Resources,  
Geological Survey  
5 Geology Road  
Columbia, SC 29212  
(803) 896-7708

Revision Type	Date	Version
Surry Scarp refined	06/2005	1.1
Geology revised	04/2006	2.0

For this and other publications please visit:  
[www.dnr.sc.gov/geology](http://www.dnr.sc.gov/geology)