

BERKELEY SOIL AND WATER CONSERVATION DISTRICT



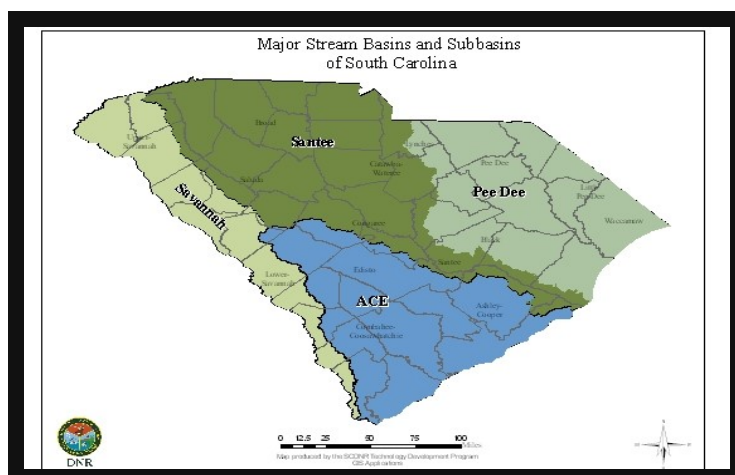
Summer 2015

South Carolina Surface Water Availability Assessment

South Carolina's lakes, rivers and streams are the focal point for meetings being held during the remainder of this year and 2016 to provide information on models to be used to determine how much service water is available for its various uses and needs. The state has never done a complete assessment on the eight river basins (Saluda, Edisto, Broad, Pee Dee, Catawba, Santee, Savannah & Salkehatchie) to learn what and how much surface water is available.

Partners and Stakeholders: Management responsibility of the state's water resources is beyond the scope of any one agency and requires cooperation and shared responsibility among all agencies and water users. SC DNR, in cooperation with SC DHEC, has begun implementing the first "whole system" basin-wide surface water availability assessment, and are in contract with consultant CDM Smith for hydro-modeling of SC's eight major river basins. Clemson Public Service and Agriculture staff are working with both state agencies to engage stakeholders (water utilities, energy companies, agriculture and environmental organizations) in the process of assessing the state's water resources. The team's intention is to offer opportunities for stakeholders to (1) provide data for models' development, (2) create an open dialogue, (3) improve assumptions used in the models, and (4) work towards a finished product that state agencies and water users alike will utilize

Continued next page



In This Issue

- Surface Water Availability Assessment
- 2015 Affiliate Banquet
- Scholarships



Figure 1. The eight surface-water basins to be modeled in South Carolina.

Assessment and modeling:

Assessment will seek to provide the characteristics and conditions of SC's water resources; quality and availability necessary for consumptive and non-consumptive uses, as well as aquifer reserves and recovery programs, through modeling of these river basins. Development of surface water quantity models will be the first step in the assessment. Each source water model will be an individual basin assessment though accounting for inter-basin transfers, withdrawals and discharges will be factored in. Additionally, ground-water models and water-demand forecasts will need to be determined for better understanding of our water resources. Water-demand forecasts will need to be determined for better understand of our water resources. Water-demand forecasts will be made for agriculture, energy, industry and public supply at 5-10 year intervals over a 50-year planning period.

Data Collection: (includes utilizing historic data back to the 1920's), model development, calibration and the stakeholder engagement process will occur over the balance of 2015 through 2016. Berkeley County's Santee basin assessment and modeling's meetings (two, to be announced) are slated for mid-2016.

Stakeholder engagement is critical to this process, as the models will be available for regulators, utilities, and others, with training to be made available at the conclusion of this effort.

Considering Berkeley's dynamic and explosive growth, wise use and conservation of our water resources presents many difficult challenges. However, under our new County Administration, we are more optimistic than ever that as we put our heads together and determine the best possible solution, these challenges can, and will, become unforeseen opportunities. Join us at Berkeley Soil and Water Conservation District.

Make your voice an important part of your children's future!

In the South, it's all about relationships ... Sandy has been an ambassador for the local people, government and businesses to the county's benefit. For that, he deserves to be recognized."

*-Commissioner
Barry Jurs*



Sandy Gibson (center) is presented the H.H. Harvey Award by Soil and Water Commissioner Barry Jurs (right) and Vice President of Farmers & Merchants Bank, Thierry Longueville (left).

2015 Affiliate Banquet

Thank you to everyone who attended our 2015 Affiliate Banquet held at the Wampee Conference Center in May. Affiliates and guests of the District gathered together for a delicious meal and warm fellowship celebrating our common interest and goals for Conservation in Berkeley County.

BSWCD Chairman Diane Edwins presided over the evening with the excellent hosting of (retired) Wampee Manager Sandy Gibson and Staff. Guest Speaker for the event was Chevis Leland, archivist for the South Carolina Huguenot Society and Co-Author of : ***French Santee, A Huguenot Settlement in Colonial South Carolina.***

The highlight of the evening was the presentation of H.H. Harvey, Jr. Award. The award is given to an individual or organization that exemplifies a significant contribution to Berkeley County - traditionally through conservation of natural resources. Mr. Gibson was selected by the Board of Commissioners to credit his work throughout the years of helping build relationships and overseeing details of important gatherings that has benefitted not only the Berkeley Soil and Water Conservation District and the Lord Berkeley Land Trust, but all of Berkeley County as well. Mr. Gibson will be retiring from Santee Cooper this summer after 30 years of service.

Affiliate Banquet



*...and a
good time
was had by
all....*





INVESTING IN THE FUTURE OF CONSERVATION

BSWCD Awards Scholarships

It has been a long-term goal finally realized this year when BSWCD awarded two graduating seniors from Berkeley County with \$1000.00 scholarships towards their future education in conservation and/or natural resources. The criteria was based on an essay of their career goals, grade point average, community involvement, financial need and letters of recommendation.

Courtney Miller, Timberland High School

School Attending: University of South Carolina

Major: Marine Science - Minor: Environmental Conservation

“As a young girl, my parents and daycare took me to the aquarium and I enjoyed going and learning. As a freshman in high school, my teacher won a trip to the SC Aquarium and the Sea Turtle Hospital. After that trip, along with a “job shadow” day, I knew that I wanted to study Marine Science. I then began volunteering and teaching the public about conservation and this lead me to want to further my education in Environmental Conservation.”

Extra Curricular Activities: Volunteer for the SC Aquarium, National Honors Society, Wrestling Manager, Beta Club, International Club, Relay for Life, Charleston Hope, Teacher’s Assistant.

“Teaching Younger generations small things that they can do - like recycling and not littering, which positively affect the environment, will motivate them to make conscious choices.”

Parents: Jason and Lisa Miller

Kyle Morrison, Berkeley High School

School Attending: Clemson University

Major: Forest Management

“I find that the expansion of urban areas is a concern to our natural resources. To cope with this problem, a job in Forestry would help advise builders on and usage and how to best manage the forests/ environment.”

Extra Curricular Activities: “I have played baseball throughout my high-school years. The first three years of high school I played football as well. The fall of my Senior year, I ran on the Cross Country team. I am a Beta Club member. I also enjoy hunting and fishing in my spare time.”

“In our country today, I believe there is a pervasive attitude of ignorance and neglect towards conservation of valuable natural resources. I do believe that this starting to improve, however. The first step towards motivating younger generations to ‘think in these terms’ is to create a strong respect and passion for nature and their surrounding environment. If they develop this strong appreciation, they will naturally come to think in terms of conservation.”

Parents: John and Carol Morrison



Above: Courtney Miller, Timberland High graduate, is our very first recipient of the BSWCD Scholarship.
Below: Kyle Morrison, Berkeley High graduate, is awarded by Commissioners Keith Gourdin and Charles Glover.



Berkeley Soil & Water Conservation District

223 East Main Street, Suite B

Moncks Corner, SC 29461

PLACE
STAMP
HERE

We would like to thank **Loretta Simmons** for her service to the Conservation District. Loretta has decided to finally go into “full time retirement” after working 25 years with Santee Cooper and then coming to aid BSWCD last year before making her retirement “official.”

Loretta looks forward to spending more time with family and friends and church activities. She plans to continue to volunteer with *Kids Who Care* and stay involved with conservation education in our community. Thank you, Loretta, for your contributions to BSWCD. You will be missed!

Pictured:

**Diane Edwins,(l),
BSWCD Chairman, with
Loretta Simmons. (r)**



New to our Team

“Beezie” Fleming is currently helping in the office, assisting the Commissioners with carrying out the mission of BSWCD.

Contact Us

Berkeley Soil and Water Conservation District

223 East Main Street,
Moncks Corner, SC
29461

Phone:

(843) 719-4146

Email us:

berkcons@aol.com