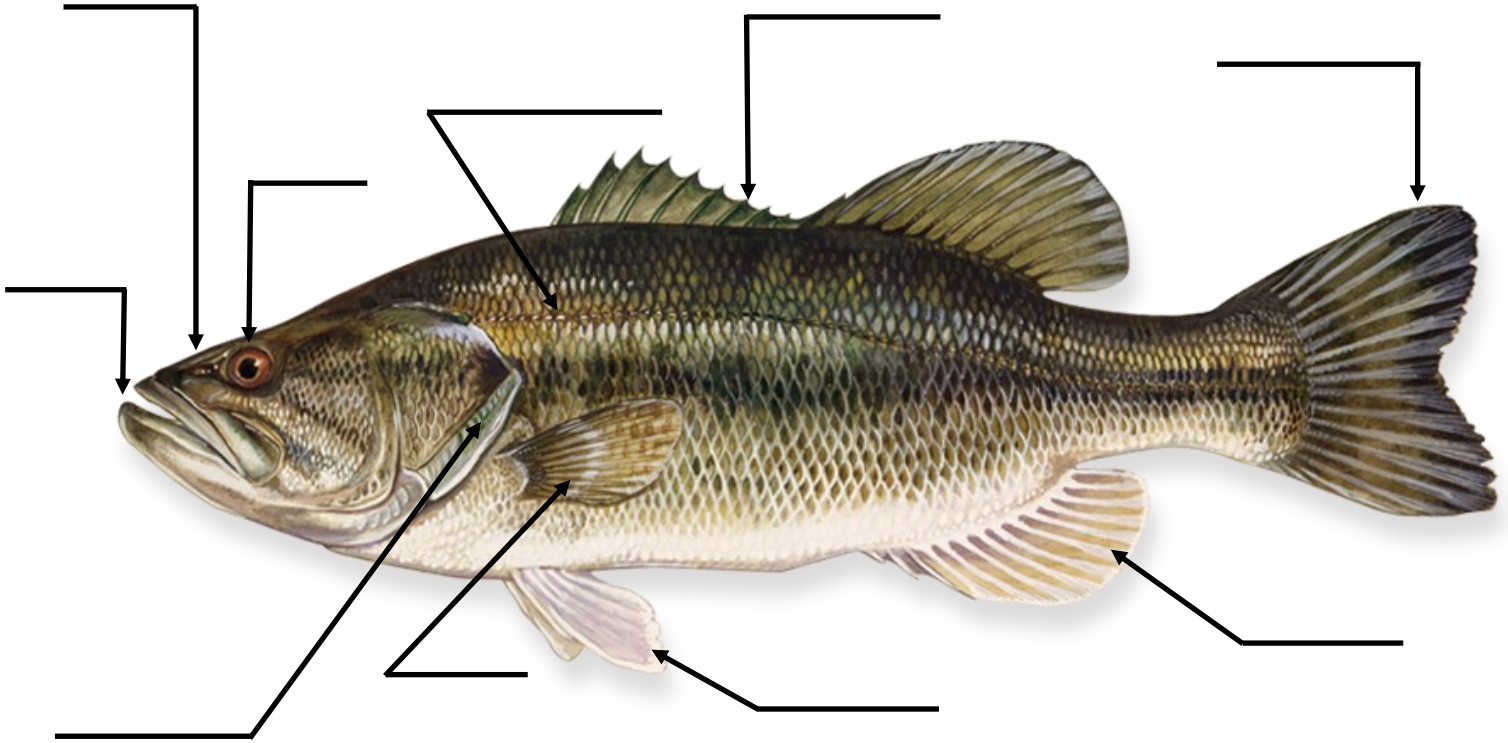


# Largemouth Bass

## *Micropterus salmoides*



<b>Word Bank:</b>	Dorsal Fin	Mouth	Pectoral Fin
Caudal Fin	Eye	Anal Fin	Gills
Lateral Line	Pelvic Fin	Nares	

**Fish Facts:** match the word bank clues of the fish's external anatomy to the fish facts below!

1. Fish breath underwater using their \_\_\_\_\_ and it is important not to damage that part of the fish when handling them.
2. The \_\_\_\_\_ is considered the engine of the fish and moves in a side to side motion to push fish forward or backwards while swimming.
3. Similar to our nostrils, the \_\_\_\_\_ in a fish are used to detect odors in the water and can be quite sensitive.
4. Used for sensory and to detect vibrations, the \_\_\_\_\_ is visible running the length of the fish's body.
5. The paired set of \_\_\_\_\_ allow fine tune movements and help to balance the front of the fish.
6. The main purpose of the \_\_\_\_\_ is to stabilize fish and help them keep their balance, sometimes this body part has spines used for self defense.
7. The \_\_\_\_\_ are two fins behind the gills that are responsible for control of directional movement of the fish, like a steering wheel.
8. Size, shape, and direction of the fish's \_\_\_\_\_ tells us a lot about what it eats and its location in the food web.
9. Found along the bottom of the fish towards the back, the \_\_\_\_\_ acts as a counterbalance to stabilize the fish.
10. \_\_\_\_\_ are an important sensory for fish, these are responsible for sensing light, shapes, and movement.